

St. Louis County Basic Emergency Operations Plan

January 2006

Prepared by the St. Louis County Police Department,
Office of Emergency Management

BASIC EMERGENCY OPERATIONS PLAN

TABLE OF CONTENTS	i
PROMULGATION STATEMENT	v
FORWARD	vi
I. PURPOSE	1
II. LEGAL AUTHORITY	1
III. SCOPE	1
IV. LIMITATIONS	2
V. SITUATION AND ASSUMPTIONS	3
A. Situation	3
1. Geography	3
2. Population Profile	3
3. Jurisdictions	4
4. Other Factors	4
B. Planning Assumptions	7
1. Baseline Assumptions for Emergency Preparedness Planning	7
2. Event Consequences	9
3. Responses To Events	10
VI. CONCEPT OF OPERATIONS	12
A. General	12
B. Response Priorities in a Major Emergency/Disaster	14
C. Inter-jurisdictional Relationships	15
1. Municipalities	15
2. Special Service Districts	16
3. Private Sector	16
4. Mutual Aid	16
VII. EMERGENCY SUPPORT FUNCTIONS AND DEPARTMENT TASK ASSIGNMENTS	17
A. Emergency Support Functions	17
1. Transportation ESF	18
2. Public Works and Engineering ESF	19
3. Mass Care ESF	20

4. Volunteers and Donations ESF	21
5. Information and Planning ESF	22
6. Health and Medical Services ESF	23
7. Animal Services ESF	25
8. Communications ESF	26
9. Public Information ESF	27
10. Law Enforcement ESF	27
11. Resource Support ESF	28
12. Energy ESF	29
13. Food and Water ESF	30
14. Business and Industry ESF	30
15. Military Support ESF	31
16. Firefighting ESF	32
17. Search and Rescue ESF	33
18. Hazardous Materials ESF	34
B. Task Assignments	35
1. Responsibilities of St. Louis County	35
Government Department Directors	
2. Duties of Specific County Government Officials	37
a. St. Louis County Executive	37
b. St. Louis County Council/Clerk	38
c. St. Louis County Counselor	39
d. Commander, Office of Emergency Management	39
e. Director, Department of Administration	40
f. Director, Department of Health	41
g. Director, Department of Highways and Traffic	43
h. Director, Department of Human Services	44
i. Director, Department of Judicial Administration	45
j. Director, Department of Justice Services	46
k. Director, Department of Parks and Recreation	47
l. Director, Department of Planning	48
m. Chief, Department of Police	48
n. Director, Department of Public Works	50
o. Director, Department of Revenue	52
p. Director of Spirit Airport	53
q. Commander, Bureau of Communications, Department of Police	54
r. Media Relations Officer, Department of Police	54
3. Supporting Volunteer Service Agencies and Organizations	55
4. Utilities Support	55

5. Amateur Radio Support	56
VIII. COMMAND AND CONTROL	56
A. Structure	56
B. Line of Succession	58
C. Emergency Operations	58
D. Levels of Activation	61
1. Level I	61
2. Level II	61
3. Level III	61
4. Level IV	61
E. Communications	61
IX. ADMINISTRATION AND LOGISTICS	62
A. Administration	62
B. Logistics	64
X. PLAN DEVELOPMENT AND MAINTENANCE	65
A. Development and Maintenance	65
B. Review	65
C. Distribution	65
XI. EXERCISES	65

ATTACHMENTS:

I. State of Missouri Statutes, Chapter 44, Civil Defense	
II. St. Louis County Revised Ordinance, Title VII, Chapter 703	
III. Sample Mutual Aid II Contract	
IV. List of Mutual Aid II Municipalities	
V. Sample Mutual Aid I Contract	
VI. List of Mutual Aid I Municipalities	
VII. St. Louis County Government Organization	
VIII. St. Louis County Government Officials	
IX. St. Louis County Revised Ordinance, Title VII, Chapter 701, Section 701. 200	
X. Identification of Emergency Responsibilities by Organizational Entity	

ANNEXES:

A. Direction and Control	
B. Department of Administration	
C. Department of Health	
D. Department of Highways and Traffic	
E. Department of Human Services	
F. Department of Justice Services	
G. Department of Parks and Recreation	

- H. Department of Planning
- I. Department of Judicial Administration
- J. Department of Police
- K. Department of Public Works
- L. Department of Revenue
- M. Evacuation
- O. Communications
- P. Spirit of St. Louis Airport
- T. Terrorism

EXECUTIVE DIRECTIVE

(PROMULGATION)

Elected and appointed officials have legal responsibility to provide for the general peace, safety, and welfare of citizens. Underpinning this public trust is the St. Louis County Basic Emergency Operations Plan. As a primary planning instrument, it conveys the organizational and operational standards the County relies on to manage a major emergency or disaster, and to make the most effective use of available resources to save lives and protect property.

To achieve the goals of comprehensive emergency management, the plan addresses actions that must take place during the four phases of emergency management. These are:

Mitigation – to reduce the incidence of hazards that can be managed or to minimize the damaging effects of those beyond human control;

Preparedness – to ensure a total community readiness to properly react and respond to a major emergency or disaster;

Response – by all sectors, that is built on cooperation and public awareness and results in a coordinated effort; and,

Recovery – to reconstitute normal services and to restore normal living conditions as soon as possible.

As County Executive, I endorse this Plan and hereby direct all personnel involved to prepare and update assigned department annexes, maintain current internal organization continuity of government plans, and work as a county-wide team to assure the most effective response and recovery will occur during a major emergency or disaster.

Date

Honorable Charlie A. Dooley
County Executive

FOREWORD

The St. Louis County Basic Emergency Operations Plan is designed to consider “all hazards” to which the County and its inhabitants may be vulnerable. These include, but are not limited to: Storms, high winds, earthquakes, floods, hazardous material releases, transportation mishaps, loss of utilities, tornadoes, terrorism or combinations of the above.

If not established in advance, incident management, and the necessity in some instances to seek outside aid, may be unduly complicated in a major emergency or disaster. Such a concern is most likely to arise and would have its greatest crippling effect, when a response requires participation by multiple agencies and/or when multiple regional jurisdictions are similarly effected by a widespread catastrophe or concurrent events. Therefore, in the interest of clarity and cooperation, this plan expresses the guidelines that St. Louis County will follow to institute and carry out comprehensive emergency management. By definition, a principal aim of comprehensive emergency management is to foster integrated coordination with neighboring communities and at all levels of government during the four phases of emergency management, i.e., mitigation, preparedness, response and recovery.

Organizationally, this plan consists of two components: The Basic Emergency Operations Plan and supporting Annexes. The Basic Emergency Operations Plan covers the general operational concepts of the County’s comprehensive emergency management program and outlines overall doctrine. The Annexes are more specific and describe in some detail how, when, and by whom emergency functions will be administered. These primarily relate to roles assumed by first and second responders.

As assigned in the Basic Emergency Operations Plan, individual County departments are responsible for maintaining up-to-date annexes reflecting current procedures, resources, organizational arrangements, and capabilities. Of no less importance is the requirement for all plan participants to ensure their utmost readiness to continue services in the wake of an endangering crisis, and effectively contribute tasked resources as needed for response and recovery.

For ease of use in orientation, training, public education, and emergency operations, this plan is separated into two sections. The Basic Plan with appendices constitutes Section I, while Section II is a single dedicated source for all annexes.

**ST. LOUIS COUNTY
BASIC EMERGENCY OPERATIONS PLAN**

I. PURPOSE

The purpose of this plan is to establish emergency guidelines that St. Louis County Government Departments and Offices shall follow in response to an incident or disaster. The general course of action they shall take to protect lives, property, public health and safety, and avert or lessen the threat of a catastrophe in any part of St. Louis County in the event of natural or man-made disasters, technological accidents, or enemy attack, is delineated in this plan.

The plan shall provide only a general framework within which the various entities shall function, but not provide such detailed instructions as to limit or prohibit imaginative, resourceful actions that a disaster situation might require. This plan and the various departmental annexes, appendices, attachments, SOP's for emergency operations, etc., shall comprise the St. Louis County Basic Emergency Operations Plan (STLC BEOP).

II. LEGAL AUTHORITY

The Disaster Relief Act of 1974, as amended (Public Law 93-288)

Improved Civil Defense Act of 1980 (Public Law 96-342)

Federal Civil Defense Act of 1950 (Public Law 81-920, as amended by Public Law 85-606 and H.R. 13116 of 1976).

Constitution of the State of Missouri and Chapter 44 of Revised Statutes of Missouri (RSMO) [Attachment I to STLC BEOP].

Revised Ordinances of St. Louis County, Title VII, Chapter 703 (Attachment II to STLC BEOP).

Revised Ordinances of St. Louis County, Chapter 701, Section 701.200 (Attachment X to STLC BEOP).

Dept of Homeland Security, National Response Plan

III. SCOPE

This plan is applicable to the government organization of St. Louis County including the executive, legislative, and judicial branches. Due to the size and complexity of St. Louis County, the plan has a direct service application to unincorporated residents and

regional service application to incorporated jurisdictions (cities and towns), and special purpose jurisdictions (fire, water, sewer, school and drainage districts). This plan details emergency management responsibilities of St. Louis County government and selected agencies and speaks to what those organizations can and cannot provide.

IV. LIMITATIONS

No guarantee of a perfect response system is expressed or implied by this plan or any of its Appendices or ESF's, Implementing Instructions, or Procedures. Since St. Louis County Government assets and systems are vulnerable to natural and technological disasters, they may be overwhelmed. St. Louis County can only attempt to make every reasonable effort to respond based on the situation, information, and resources available at the time of the disaster.

The disaster response and relief activities of St. Louis County Government may be affected by the following consequences of a disaster:

- A. The ability of the citizen population to be self-sufficient for at least three days without outside supplies of food, water, medical and shelter resources at home and work.
- B. Diminished police, fire, emergency medical, public utilities, regional transportation, and other critical services due to damage to facilities, equipment and demands on available personnel.
- C. Shortages of critical medical supplies at medical facilities due to high demand, limited storage and logistical obstacles.
- D. Shortages of human resources of trained response personnel with adequate equipment to respond to requests for assistance for fire, emergency medical, police, public works, and hazardous material release emergencies. The impact of these shortages may be compounded by the need to sustain uninterrupted operations for an indefinite period of time.
- E. Damage to lifeline utilities and facilities such as roads, bridges, railways, air facilities, drinking water, and wastewater, fuel, energy and communications networks. Normal distribution of resources may be curtailed or reduced, impacting both social and economic infrastructure of the County.
- F. Diminished emergency communications to responders because of equipment damage or overburdening of the system.
- G. Large migrations of people into or within the County as refugees will stress all support systems, particularly mass shelters, provision of food and water and delivery of supportive medical care.

- H. The availability of shelters for displaced persons and families has changed since the fallout shelter programs of the 1950s. The American Red Cross, Salvation Army and other organizations with which coordination is required manage current capacities.
- I. The majority of the population resides and works in structures that provide limited shelter from certain threats such as earthquakes or weapons of mass destruction.

V. SITUATION AND ASSUMPTIONS

A. Situation

1. Geography

- a. St. Louis County is the largest county in the state and is located at the eastern boundary of the State of Missouri, at approximately the midpoint.
- b. The County is partially bounded by the Mississippi and Missouri Rivers, at their confluence. The south boundary is the Meramec River. Consequently, the County is divided into three major watersheds.
- c. The total area of the County is 524 square miles. About 350 square miles are within incorporated municipal city limits.
- d. Most of the County has been urbanized in typical concentric expansions, particularly in the last half century.
- e. The surface geology ranges from extensive alluvial flood plains to fragile loesse deposits in highlands. Undisturbed land is typically covered by climax forestation, most of which has been encroached by low-density development.
- f. The elevation ranges from 380 to 900 feet above mean sea level with an undulating topography characterized by multiple tributaries.
- g. Bedrock under the urbanized area is predominantly limestone. Carst topography occurs near the Mississippi in north and south parts of the County. Deep alluvial deposits overlay bedrock in the floodplains of the three rivers.

2. Population Profile

- a. The County's 1,016,315 (2000 Census) residents are part of a regional population center that includes about 18% of the population of the state and about 39% of the bi-state population of 2,603,607 (7 Counties in Missouri, and 5 in Illinois).

- b. The incorporated part of the county is divided among 91 municipalities that range in size from 12 to over 50,500 residents. Of these municipalities, 9 have populations over 20,000, and 53 have populations under 5000. Approximately 328,560 residents live in the unincorporated part of the County.
- c. About 18 % of the population of the County is over 60 years in age and about 27% are under 19. Enrollments in Nursery and preschool total 23,860 and Elementary / High School enrollment totals 179,000.
- d. There are 8 regional shopping centers with between 1.0 and 2.0 million square feet. There are 68 major malls with total areas between 100,000 and 1.0 mil. Square feet.
- e. About 27% of housing units, 113,826, are multi-family.
- f. Of the several office concentrations in the County the largest are in the Olive/Westport area with 25% of the total office space and Clayton/Mid-County, with 18%.

3. Jurisdictions

In addition to municipal jurisdictions, the County also includes the following pseudo-governmental jurisdictions and primary public service providers:

- 1. 20 Municipal Fire Departments.
- 2. 23 Fire Protection Districts.
- 3. 32 Emergency Medical and Ambulance Services.
- 4. 4 major Dispatch Systems and numerous jurisdiction based systems.
- 5. 3 Hospital Systems, 12 private hospitals.
- 6. 62 Full-time Municipal Police Departments, totaling 2139 full time.
- 7. One regional Sewer District with 8 treatment facilities.
- 8. Privately-Owned Water (4 treatment plants), Natural Gas (major storage and pipeline infrastructure) and Electricity Distribution Systems.
- 9. Telecommunications include a variety of privately operated systems for telephonic, television, radio and internet.
- 10. There are 24 School Districts.

4. Other Factors

- a. The roadway infrastructure includes 5238 miles of road and 200 bridges.

b. The maintenance responsibility is divided as follows:

U. S. Highways and Interstate	309 miles
State Highways	401 miles
County Arterial Road System	320 miles
County Roads, local, unincorporated	1058 miles
Municipal	3150 miles
County roads, total	5238 miles

c. Lambert-St. Louis International Airport, while owned and managed by the City of St. Louis, is physically located on 2,600 acres, in St. Louis County. The Airport has an estimated 474,161 takeoffs and landings in 2001 accommodating 26.7 million passengers and 106,089 tons of cargo. The second largest airport within St. Louis County is the Spirit of St. Louis Airport, which is located in the western part of the County in the City of Chesterfield. It is owned and operated by St. Louis County.

d. 10 major railroads traverse the county.

e. Barges on the Mississippi and Missouri Rivers carried a total of 33,330,000 tons of cargo through the region. 13% of the cargo was petroleum related, 4% were various chemicals.

f. There are 72 County park facilities, of which 28 are at least 100 acres and 6 are over 500 acres. The State also operates 17 park and conservation areas, of which 6 are over 1000 acres. Not all of these parks are developed or accessible to roads and utilities and some are in the floodplain.

g. There are 9 universities located within St. Louis County:

WASHINGTON UNIVERSITY, One Brookings Drive, St. Louis, MO. 63130, covers 169 acres and has an estimated daily population of 13,000 faculty, staff, and students.

UNIVERSITY OF MISSOURI-ST. LOUIS, 8001 Natural Bridge, St. Louis, MO. 63121, covers over 175 acres and has an estimated daily population of 14,000 faculty, staff and students.

ST. LOUIS COMMUNITY COLLEGE - FLORISSANT VALLEY CAMPUS, 3400 Pershall Road, St. Louis, MO. 63135, is located in the northeastern part of the County just south of Interstate Highway 270 at its intersection with West Florissant Road.

ST. LOUIS COMMUNITY COLLEGE – MERAMEC CAMPUS, 11333 Big Bend Boulevard, Kirkwood, MO. 63122, is located in the City of Kirkwood in the south-central part of the County just east of Highway

270 on Big Bend.

ST. LOUIS COMMUNITY COLLEGE – FOREST PARK CAMPUS, 5600 Oakland Avenue, St. Louis, MO. 63110, is located parallel to Interstate Highway 40-64 directly across from Forest Park between Kingshighway Boulevard and Hampton Avenue.

WEBSTER UNIVERSITY, 470 East Lockwood Avenue, Webster Groves, MO. 63119, is located at Lockwood and Bompert.

MARYVILLE UNIVERSITY, 13550 Conway Road, Town and Country, MO. 63141, is located to the northeast of Highways 40-64 and Missouri 141.

FONTBONNE UNIVERSITY, 6800 Wydown Boulevard, Clayton, MO. 63105, is located at Big Bend and Wydown.

MISSOURI BAPTIST UNIVERSITY, One College Park Drive, Town and Country, MO. 63141, is located parallel to Interstate Highway 40-64 three quarters of a mile west of Interstate Highway 270.

- h. St. Louis County currently has the capabilities, resources and expandable potential that, if required in the event of an emergency situation (natural, or man-made), would contribute materially to the preservation of life, property, and continuity of government services. Capabilities include but are not limited to emergency warning system; mobile communications; over 3,000 technically qualified County employees; heavy and light earth-moving equipment; strategically located community shelters; and highly qualified police and fire services. In addition, a high density of human resources is available who, as citizen volunteers, could be trained to assist in traffic control, fire fighting, medical assistance, shelter management, radiological monitoring, mass feeding, and search and rescue operations.
- i. St. Louis County is vulnerable to many different types of technological hazards capable of creating emergency or major disaster situations.
- j. Possible natural disasters include earthquakes, floods, heat waves, tornadoes, and winter storms.
- k. Potential technological hazards include conventional, nuclear, biological, and chemical terrorist attack; civil disorders; dam failures; hazardous materials stationary incidents; hazardous materials transportation incidents; power failures; transportation accidents and urban fires.
- l. St. Louis County Government's primary Emergency Operations Center

(EOC) is in the underground shelter facility at 14847 Ladue Bluffs Crossing Drive in Chesterfield, MO. Should the emergency situation render that facility unusable or unsuitable for the emergency management operations being conducted, an alternate EOC can be established at the St. Louis County and Municipal Police and Fire Academy in Wellston, Missouri, or the County's Mobile Command Center.

- m. This plan provides the necessary guidance for the local municipalities and St. Louis County Government Departments to develop compatible plans and procedures, thereby establishing a common direction towards achieving identical goals.

B. Planning Assumptions

The following compilations are intended to identify potential issues and concerns but are certainly not complete because growing awareness and continuing planning will both reveal new issues and cope with existing ones.

1. Baseline Assumptions for Emergency Preparedness Planning
 - a. Natural and accidental events will occur within St. Louis County that create emergent situations and pose the potential of disastrous proportions.
 - b. Although some of these situations may occur after implementation of warning and other preparedness measures, it is likely that there will be insufficient forewarning of any disaster to allow for planning efforts beyond real-time reactions. Response times will be retarded in proportion to the magnitude and number of decisions required. It is assumed that the Emergency Alert System will be in operation during and after any disaster.
 - c. A properly designed and implemented Emergency Operation Plan will prevent the loss of life, minimize illness and injury, and preserve property and community integrity. This plan will correspond to the four phases of Comprehensive Emergency Management; mitigation, preparedness, response and recovery, but emphasize preparedness and response.
 - d. Provisions of Homeland Security Statutes and regulations will govern certain response activities. The recovery of losses and costs from Federal resources will require specific preparations and compliance with specific regulations.
 - e. St. Louis County will exercise a leading role in the management of a major disaster or multi-jurisdictional emergency.

- f. The demand by the public for information will be very high and accentuated in certain types of disaster. Conversely the management of public reaction will require the distribution of needed information. During most emergencies, the local Emergency Alert System (EAS) entry point stations, one being KMOX-AM (1120 Khz), and the St. Louis County Emergency Warning System, will continue to operate and be capable of providing public warning and emergency information.
- g. Certain Emergency Support Functions will be required to respond to different emergencies, and certain assets and resources are critical to each of these ESF's.
- h. The Incident Command System, once institutionalized in the BEOP and each Department's Annex, will facilitate communication, resource management and real-time planning of response actions in the complex jurisdictional environment of St. Louis County.
- i. All County officials, appointees and employees with assigned functions and duties will perform them fully. Provisions will be made for employees to address family needs that cause conflicting priorities and that others who are qualified will perform those duties if assigned personnel are not able.
- j. This plan is constructed as a "worst case scenario" for natural hazards typical for St. Louis County. This would most probably be an earthquake but might also include severe weather. The provisions of this plan could also apply to man-made disasters such as riots, hostage/terrorist situations, military attack, chemical spills, pollution, energy failures and critical materials shortages. The threat of Terrorism and the use of weapons of mass disruption/destruction will remain constant for the foreseeable future. (See Annex T).
- k. A hazard and vulnerability analysis reveals that the most likely disaster situations confronting St. Louis County, in descending order of probability and impact, are earthquakes; uncontrolled release of hazardous materials (HAZMAT); tornadoes; winter storms; major utility failures/curtailments; high winds; floods; and enemy attacks with thermonuclear and/or conventional weapons. The risks of terrorist use of weapons of mass destruction or disruption is possible but not as quantifiable.
- l. Although acts of war are considered unlikely, war could occur as the result of an accident, irrational act, or the unplanned escalation of limited hostilities. If a planned act of war occurs, it will probably be

after days or weeks of international tension that would allow such protective measures as evacuation and sheltering to be implemented. An act of war with only short prior notice would require implementation of an in-place shelter plan.

- m. St. Louis County residents, businesses, and industry will have to utilize their own resources and be self-sufficient following a disaster event for a minimum of three days. Priority of response will be to life safety, protection of public property, the economy and the environment. Re-establishment of government functions and basic infrastructure (utilities, transportation, and economy) will be critical to returning to a “normal” situation.
- n. Emergency medical facilities will be overcrowded and possibly overwhelmed with a commensurate shortage of supplies, equipment and personnel

2. Event Consequences

For the sake of establishing planning design standards, it is assumed that the majority of significant emergencies, major disasters and acts of terrorism will result in some or all of the following consequences to which County resources might be applied:

- a. The need for complex, time-sensitive decision-making regarding the deployment of assets and resources based on priorities and strategies developed in a very volatile information and communication environment.
- b. Communications will be a problem in any St. Louis County disaster because the County does not have an interoperable communications system in place to link the exceptional diversity of responders or address all disaster needs.
- c. The potential of a large number of casualties concurrently needing some form of medical care ranging from immediate life saving care and triage to preventive care and non-critical care.
- d. The potential that certain terrifying emergencies may precipitate adverse behavioral reactions, up to the point of periods of panic or civil disintegration.
- e. The emergence of Public Health threats as a result of degraded environmental conditions, unsafe water, poor food preparation, contagion or toxic exposures.

- f. The separation or isolation of family members and resultant distressed behaviors of attempts to reunite.
 - g. Serious disruptions of civil communications networks, including telephones, cell phones, internet, etc. either by overburdened systems or infrastructure losses.
 - h. Obstructions of traffic circulation for victims and responders, caused by debris, damage, traffic congestion or rerouting.
 - i. The potential of a large number of non-casualties who are uncertain of their medical status, overwhelmed by the emergency situation or simply seeking reassurance.
 - j. Disruption of basic public utilities that results in inconvenience, displacement of resident and working populations or actual hazards.
 - k. Interruption of critical power and fuel supply lines needed by responders and victims.
 - l. Structural damage that will pose a continuing threat during rescue, stabilization of scenes and long term recovery efforts.
 - m. Destructive impacts on the commerce and economy of the community because of sensitive to reentry access.
 - n. A temporary disruption of governance and civil services necessary to the ordinary functions of the community.
 - o. Domestic animals and pets that become collateral casualties and refugees.
3. Responses To Events
- a. Local resources must be relied upon for the first response while external assets will be used to supplement local resources only after the local assets are exhausted or overwhelmed. Depending upon the severity and magnitude of the situation, the affected area may be able to cope effectively with the situation. It may be necessary to request assistance available through volunteer organizations, private enterprise, mutual aid agreements, or State and Federal sources including post-disaster victim aid from various Federal agencies under the provisions of the Disaster Relief Act of 1974.
 - b. Massive mutual-aid responses by the first responder community for fire, rescue, EMS, police, HazMat, etc. will require coordination.

Subsequent to the initial response, converging responders will need to be integrated. Private sector support will also be needed to augment government disaster response and recovery efforts.

- c. The need to transport people, equipment and material from staging areas to points of need; to distribute food, water and medical supplies; and to provide fuel and power where they are needed will create major logistic demands.
- d. The institution of the Incident Command System and a Unified Command structure as a means of managing the responders is certain to occur.
- e. County Departments will be identified as the source of certain critical assets and support not available to smaller jurisdictions.
- f. Disasters occurring near or across jurisdictional borders will require multi-jurisdictional coordination, communications and response.
- g. An extreme demand for rapid public information, direction, instruction and reassurance will emerge in the midst of a degraded communications environment.
- h. The displacement of residents and refugees to temporary shelters requiring support for feeding, hygiene, privacy, counseling, medical evaluation, reunification, etc. is a likely outcome of many disaster scenarios.
- i. Various types of hazardous material exposure that may require containment, decontamination, personal protection, or post-exposure medical evaluation are likely as singular events or in combination with other incidents.
- j. The response to incidents involving hazardous materials will be by specially trained and equipped teams that may be overloaded by major or multiple events.
- k. The potential need to either evacuate an endangered public or quickly establish the alternative of sheltering-in-place will rely on rapid public communication capacities.
- l. The potential necessity of a quarantine or other drastic public health preventive action to isolate contagion would be a major challenge.
- m. Traumatic effects on mental health for victims and responders can be prevented or mitigated with appropriate care.

- n. A level of engagement of law enforcement personnel in investigation and the exercise of policing authorities may change the management of the incident.
- o. The convergence of persons who want to help with donations of labor, valuable goods and services will present both benefits and problems.
- p. The convergence of some persons at the scene with no constructive or legitimate purpose there will add to congestion, hazards and the need for law enforcement.
- q. Property owners may challenge perimeters and access points to gain access to retrieve valuables, assess damages, rescue pets, etc., creating dilemmas for incident managers.
- r. Certain State and Federal assets may be mobilized almost immediately, if available and if appropriate conditions are met.
- s. St. Louis County Government will be expected to remain operational throughout the emergency/disaster.
- t. Other public jurisdictions, for example fire, water, sewer and school districts, will also be expected to develop mitigation, preparedness, response and recovery planning and capabilities for their own jurisdictions.

VI. CONCEPT OF OPERATIONS

A. General

It is the responsibility of each level of government (Federal, State, County, Municipal) and each department head to provide for a comprehensive emergency program. This program must meet the emergency needs of those who have been, or might be, affected by an emergency or major disaster, whether or not higher-level assistance is, or might be, available.

Local government is recognized as the first line of official public responsibility for emergency management activity. In an emergency, State and Federal governments can be counted on for major support only when the damage has been unusually widespread and severe. The role of the local emergency management agency, as the focus of the planning effort, is to develop and maintain an on-going program of mitigation, preparedness, response, and recovery. The St. Louis County Office of Emergency Management serves County Government by working with the departments of County Government and private sector organizations in the

development of plans and capabilities responsive to those hazards which seriously threaten the County. Prior to a crisis, hazard mitigation programs can reduce the vulnerability of people and property. In a crisis, effective response is often a result of those measures that have been taken prior to the emergency, either as mitigation or preparedness.

The role of SEMA is similar in many ways to that of the St. Louis County municipalities. It must have an effective organization and develop and maintain the necessary plans, facilities, and equipment. On a day-to-day basis, it must administer an active, on-going emergency management program at both State and local levels. SEMA will ascertain, through contact with local officials, the emergency management needs of its political subdivisions. It will then assess State and Federal Government resources and facilitate the acquisition, application, and coordination of those resources. SEMA provides direct guidance and assistance to local jurisdictions in program development and channels Federal guidance and assistance down to the local level. In a major emergency, SEMA ensures a coordinated response through the combined efforts of local government, State and Federal agencies, and private sector organizations.

Throughout the Federal Government there exists a vast body of resources which can be pulled together to plan for, as well as respond to and aid the recovery process from, emergency situations. FEMA is the agency that serves as the principal point of contact within the Federal Government for emergency management activities. As the Federal coordinator of emergency management activities, it is FEMA's task to pull these resources together. In partnership with State and local governments, FEMA supports their preparedness efforts by providing national program policy and guidance, and technical and financial assistance. FEMA's ten Regional Offices provide the vital link in supporting State and local emergency management activities. FEMA's Region VII Headquarters in Kansas City, Missouri is responsible for the four-state area of Missouri, Iowa, Nebraska, and Kansas. In the event of a major emergency or disaster, FEMA is ready to provide assistance when the demand exceeds the capacity of SEMA and local resources. It is FEMA's responsibility to coordinate the response of other Federal agencies that administer their own disaster relief programs.

This plan is based upon the concept that initial emergency management response will, to the maximum extent possible, be handled at the lowest level of local government (municipal or County). Extra assistance may be requested by invoking mutual aid agreements between St Louis County Government and 80 of the municipalities and 12 of the fire protection districts. If additional assistance is required beyond State capabilities, SEMA will coordinate requests to the proper federal agencies, including a request to the Region VII Director in Kansas City, Missouri for a Presidential Disaster Declaration. The FEMA Regional Director will add his recommendations to the request and forward it to the FEMA National Headquarters in Washington, D.C. From there it will be referred to the President, who can either deny the request or decide to make an "Emergency Declaration" or

a “Major Disaster Declaration.” This will allow supplemental Federal financial and technical assistance to be provided. Some federal agencies, such as the Small Business Administration and the U.S. Army, Corps of Engineers, have statutory authority to make certain programs or resources available without presidential approval.

Emergency management assignments in subsequent paragraphs of Section V of this plan are based upon the concept that they parallel normal, day-to-day functions as closely as possible. The same material resources, expertise, and personnel shall be employed as much as possible before seeking outside assistance.

Depending upon the severity and magnitude of the emergency, it may be necessary to suspend various routine activities normally performed by levels of government, as well as by business, industry, and individual citizens. These suspensions or curtailments will be determined during, and shortly after, an occurrence, and the resources will be diverted into other response and short-term recovery activities.

The elected and appointed county officials, departments and offices of the county, and supporting organizations, agencies, or individuals, will retain their identity and autonomy but will function under this plan as an emergency organization under the direction of the County Executive. The essential activities of the emergency organization will be coordinated through the St. Louis County EOC.

The Director of each county government department and office is responsible for providing qualified and trained personnel to the EOC and to their respective organizations to carry out essential activities assigned.

All public information disseminated to the news media on county government emergency operations and emergency services by county departments, offices, and elected or appointed officials, will be released only with the approval of the County Joint Information Center (JIC) to ensure release of compatible and accurate information. (See Annex A)

An evaluation of the situation will be made by the Office of Emergency Management based on agency reports and reports from damage assessment teams. The County Executive will then direct county resources into the affected area and/or declare a state of local emergency to exist in the area. The county plan will be implemented, the EOC activated, and county resources made available for special assistance as requested by the Office of Emergency Management. The EOC staffing assignments shall be as shown in Annex A of the Basic Emergency Operations Plan.

B. Response Priorities in a Major Emergency/Disaster

1. Self Preservation

Protection of County employees (including dependents) and assets from the effects of a disaster would be the first priority. The expectation would be that the employee's family would be prepared to be self-reliant after the initial incident in order for the employee to provide timely lifesaving services and other critical operations as effectively and with as little interruption as possible. Self-preservation includes actions taken immediately before, during and after an event.

2. Lifesaving/Protection of Property

This is a focus on efforts to save lives of persons other than County employees and their dependents. It may include prevention or mitigation of major property damage if results of such damage would likely present an immediate danger to human life.

3. Unit Reconstitution

Unit reconstitution is the recall of critical employees, if the incident occurs during non-working hours, and the collection, inventory, temporary repair and allocation of County assets in order to provide prompt and sustained operations in response to a disaster. This would include activation of the County EOC for the purpose of coordinating emergency response activities.

4. Emergency Food and Shelter

Provision of immediate food and shelter for disaster victims, primarily through the Red Cross with coordination of the EOC, would become an immediate priority.

5. Restoration of Infrastructure

Restoration of the County's critical infrastructure (utilities, roads, bridges, buildings, etc.) would be a prime concern that would require the coordination of local, state, and federal agencies with the private sector.

6. Statutory Response

Providing a partial or full range of County services beyond that of lifesaving and security, law enforcement, etc. Included under statutory response is County support to other units of local government in their assigned missions, coordinating additional resources, declaring a state of emergency, and requesting state and federal assistance.

7. Recovery

Restoration of lost or impaired capabilities caused by the effects of the disaster or emergency to include a return to normal operating conditions and provision of non-emergency services to the public.

C. Inter-jurisdictional Relationships

1. Municipalities

- A. Under the provisions of Chapter 44 RSMo, each city may establish an emergency management agency and appoint an emergency program manager.
- B. Each city shall notify the County of the individual responsible for emergency management activities in its jurisdiction. Any city not choosing to establish an emergency management agency may develop a cooperative intergovernmental agreement with the County, specifying the emergency management activities to be accomplished at each level.
- C. The chief executives of the incorporated cities within the County are responsible for the direction and control of their local resources during emergencies.
- D. The chief executives of the incorporated cities are responsible for requesting additional resources not covered under mutual aid for emergency operations. Such requests for assistance shall be directed to the St. Louis County Office of Emergency Management, including any requests for a state declaration of emergency or presidential disaster declaration.

2. Special Service Districts

These districts provide services such as fire protection and water delivery systems that are not available from county government. They are governed by an elected Board of Directors and have policies separate from city and county government. They often overlap city and county boundary lines and serve as primary responders to emergencies within their service districts. They are responsible for coordination of policies, plan development, and operations activity through designated representatives.

3. Private Sector

Business and industry, volunteer organizations and the public can augment disaster response by local government agencies.

4. Business and Industry

The Commander of the Office of Emergency Management will perform coordination efforts with business and industry. This will include providing appropriate assistance in actions taken by industry to meet State regulations in emergency preparedness and businesses that provide essential services such as utility companies. Schools, hospitals, nursing/care homes and other institutional facilities are required by federal, state or local regulations to have disaster plans.

5. Volunteer Organizations

These organizations will provide specialized services in emergency situations. The County will generally work with these organizations through previously established formal and informal agreements. In the preparedness time frame, essential training programs will be coordinated by the sponsoring agencies, such as the American Red Cross, Salvation Army, church groups, amateur radio clubs, etc.

6. Public

The public shall be provided available educational/instructional materials and presentations on subjects regarding safety practices and survival tactics for the first 72 hours of a disaster.

7. Mutual Aid

State law grants permission for local governments to enter into Mutual Aid Agreements with public and private agencies in accordance with their need. Personnel, supplies and services may be utilized by a requesting agency if the granting agency cooperates and extends such services.

VII. EMERGENCY SUPPORT FUNCTIONS AND DEPARTMENT TASK ASSIGNMENTS

A. Emergency Support Functions

At all levels of emergency management, federal, state, and local personnel and resources are grouped into Emergency Support Functions (ESF). Each ESF is headed by a primary agency which has been selected based on its authorities, resources and capabilities in that particular area. Other agencies have been designated as support agencies for one or more of the ESF's based on their ability to support the primary ESF.

ESF's provide resources using their primary and support agency authorities and

capabilities in coordination with other ESF's to support emergency management. ESF's allocate resources based on priorities and needs identified. Normally, only those ESF's managing the emergencies are activated. The following are ESFs used by St. Louis County Office of Emergency Management.

- | | |
|--|----------------------------------|
| 1. Transportation | 10. Law Enforcement |
| 2. Public Works and Engineering | 11. Resource Support |
| 3. Mass Care | 12. Energy |
| 4. Volunteers and Donations | 13. Food and Water |
| 5. Information and Planning | 14. Business and Industry |
| 6. Health and Medical | 15. Military Support |
| 7. Animal Services | 16. Firefighting |
| 8. Communications | 17. Search and Rescue |
| 9. Public Information | 18. Hazardous Materials |

1. Transportation ESF

Responsibilities:

- 1) Coordinating transportation support to St. Louis County Government and volunteer organizations

Facilitating and prioritizing transportation resources for the transportation of people, materials and services.

In conjunction with the *Department of Administration*, will provide courier and driver support.

Assist *St. Louis County Police Department* in performing evacuations and re-entry procedures by coordinating mass transit assets and controlling traffic at critical points and intersections.

Processing of all vehicle requests.

If air transportation is necessary for any reason, coordinate this effort with the Director of the *Spirit Airport*.

- 2) Restoration of Transportation Infrastructure

Road and bridge deck inspections.

Identifying critical routes and bridges for primary response activities.

Performing all Department-specific actions to assist with recovery operations.

Opening and maintaining roadways.

Coordinating traffic flow detour patterns and detours. In conjunction with the *St. Louis County Police Department Media Relations* person, will provide that information to the media.

Removing debris to an appropriate pre-determined disposal site. This effort will be coordinated with the *St. Louis County Department of Planning*.

Identify the need for any special equipment and response team assistance that can be provided by the *St. Louis County Department of Parks and Recreation* and the *St. Louis County Department of Public Works*.

Primary Department:

Department of Highways and Traffic

Assisting Departments:

Office of Emergency Management [OEM]

St. Louis County Police Department

Department of Administration

Department of Parks and Recreation

Spirit of St. Louis Airport

Department of Public Works

Department of Planning

Assisting Agencies:

State Emergency Management Agency

Missouri Department of Transportation [MoDOT]

Missouri National Guard

East-West Gateway Coordinating Council

Laidlaw Bus Company

Metro Transit

Cab Companies, (Laclede)

Memoranda, Contracts, Other Agreements:

2. Public Works and Engineering ESF

Responsibilities:

1) Assessment

Structural damage assessment.

Assist in clearance of debris to enable reconnaissance and emergency access.

Technical assistance during rescue, response and recovery.

2) Coordination

Emergency demolition or stabilization of damaged structures. Will include the coordination of efforts regarding any historic sites or structures identified by the *St. Louis County Department of Parks and Recreation*.

Assisting with emergency power and lighting.

Will coordinate with the primary *Fire Service* provider to obtain damage assessment information.

Removal and disposal of structural debris. If large amounts need to be managed, coordinate with the *St. Louis County Department of Planning*.

In conjunction with the *St. Louis County Police Department Media Relations* person, will provide damage assessment information to the media.

3) Restoration

Facilitating critical facility repairs of potable water, wastewater and solid waste facilities.

Providing technical advice and evaluations.

Coordinate or assist in procuring engineering and construction skills, equipment, materials, construction management and inspection support in conjunction with *St. Louis County Department of Highways and Traffic*.

Obtaining required environmental waivers and clearances.

Primary Department:

Department of Public Works

Assisting Departments:

Office of Emergency Management
St. Louis County Police Department
Department of Highways and Traffic
Department of Parks and Recreation
Department of Planning

Assisting Agencies:

Missouri Department of Transportation
State Emergency Management Agency
Metropolitan St. Louis Sewer District [MSD]
Missouri American Water Co
Laclede Gas Co
Ameren UE
Fire Districts / Departments

Memoranda, Contracts, Other Agreements:

3. Mass Care ESF

Responsibilities:

- 1) Coordinate efforts to provide shelter, food and emergency first aid in St. Louis County government owned or provided facilities.
Identify shelters, in advance or for real-time support. The use of

public buildings, expropriated private structures and St. Louis County owned buildings needs to be coordinated with the *St. Louis County Department of Public Works* to determine feasibility.

Arrange temporary shelter if needed to support an evacuation. Coordinate this effort with the *St. Louis County Police Department*.

Coordinate with the *St. Louis County Housing Authority* and *St. Louis County Department of Planning* in providing temporary and long-term housing.

Provide for feeding facilities that serve both victims and workers from both fixed and mobile sites.

Provide for emergency first aid and sub-acute medical care to supplement primary sources for both victims and workers.

2) Provide liaison to the American Red Cross

Work directly or through designated State offices.

Prepare for an initial self-sufficient period of at least 72 hours before outside assistance is available.

Assist in the collection and distribution of Disaster Welfare Information to aid family reunification, tracking of victim status and assistance to non-resident victims.

3) Monitor the activities of social service agencies.

Coordinate with the *St. Louis County Department of Human Services* and the Missouri Division of Family Services to meet any special needs of children estranged from their parents during emergencies.

Identify and address the needs of special populations who are separated from caregivers.

4) Coordinate with the *St. Louis County Department of Planning* to develop emergency legislation establishing mobile home parks to serve as long-term temporary housing sites to accommodate FEMA housing units. Provide information regarding hotels/motels that may serve as temporary housing stock.

Primary Department:

Department of Parks and Recreation

Assisting Departments:

Office of Emergency Management

Department of Human Services

St. Louis County Police Department

Department of Planning

Department of Public Works

St. Louis County Housing Authority
St. Louis County Department of Health

Assisting Agencies:

State Emergency Management Agency
Missouri Department of Health and Senior Services
American Red Cross

Memoranda, Contracts, Other Agreements:

4. Volunteers and Donations ESF

Responsibilities:

- 1) Monitor the collection, storage, inventory and distribution of donated goods. If necessary,
- 2) Assist in the staging and deployment of needed services. Coordinate with the *St. Louis County Police Department* to assure the security of donated items.
- 3) Monitor the activities of social service agencies.
 - Provide liaison for the direction and management of organized donations of goods, services and equipment.
 - Coordinate bulk distribution of emergency relief supplies and donated goods and services to disaster victims in conjunction with local volunteer organizations and *St. Louis County Department of Parks and Recreation*.
 - Provide direction and liaison in the management of unsolicited goods, unaffiliated volunteer services, and cash donations to meet identified personal care needs of victims and workers.
 - Coordinate with the *St. Louis County Department of Administration* to insure that the proper legislation is in place to accommodate receiving and securing cash donations and the proper legal processes are in place for distribution of these funds.

Primary Department:

Department of Human Services

Assisting Departments:

Office of Emergency Management
St. Louis County Police Department
Department of Parks and Recreation
Department of Administration

Assisting Agencies:

State Emergency Management Agency
Missouri Volunteer Organizations Active in Disaster [VOAD]
United Way of Greater St. Louis
AmeriCorps

Memoranda, Contracts, Other Agreements:

5. Information and Planning ESF

Responsibilities:

- 1) Collect, analyze, process and disseminate essential elements of information to facilitate emergency response and recovery efforts in a potential or actual disaster.
- 2) Preparation of needs assessments, a variety of short and long-term plans, report documentation, briefings and technical support.
- 3) Document the processes of analysis, planning and response.
- 4) Provide direction to ESF representatives operating through the *Emergency Operations Center* for the procurement, staging, deployment and stand-down of personnel, equipment and material.
- 5) Provide a central point of contact and liaison for state and federal agencies, volunteer organizations and local resources to obtain processed information for incident management.
- 6) Identify appropriate sites throughout St. Louis County to serve as emergency debris processing sites, and other sites adequate for the safe disposal of inordinate amounts of debris that may result from structural demolition requirements.
- 7) Provide locations for the safe disposal of inordinate amounts of debris, some of which may have evidentiary value. Coordinate this effort, if necessary, with the *St. Louis County Police Department*.
- 8) In conjunction with the *St. Louis County Department of Parks and Recreation*, develop procedural guidelines to establish temporary trailer cities at parks locations.
- 9) In conjunction with the *St. Louis County Department of Revenue*, provide information regarding the value of commercial and residential property and the expenses experienced by disaster victims.

Primary Department:
Department of Planning

Assisting Departments:
Office of Emergency Management
Department of Highways and Traffic
Department of Parks and Recreation
Department of Revenue
St. Louis County Police Department

Assisting Agencies:
State Emergency Management Agency
Federal Emergency Management Agency

Memoranda, Contracts, Other Agreements:

6. Health and Medical Services ESF

Responsibilities:

The following is derived from the Federal Response Plan (FRP), ESF #8. The following functions are support capacities available from federal assets based on an appropriate State-level request for assistance, and after determination by FEMA that a response is warranted. The Federal response will utilize locally available health and medical resources to the extent possible to meet the needs identified by State and local authorities, implying that these ESF's are expected from local resources. National assets will be used to meet additional requirements that exceed local and State capacities or require replacement. Federal health and medical assistance is generally categorized into 4 major functions of 1) prevention, 2) medical services, 3) mental health services, and 4) environmental health.

1) Prevention

Health Surveillance of the general and high-risk populations, epidemiological studies and technical assistance on prevention and precautions.

Food / Drug / Medical Device Safety; assuring safety and efficacy.

Public Health Information meeting real-time and longer-term needs.

2) Medical Services

Assessment of Health / Medical Needs, priorities and infrastructure status.

Medical Care Personnel including medical and public health functions, assuring the capacities of triage, medicine, surgery, stabilization, transport, definitive and specialized care.

Health / Medical Equipment and Supplies; providing or

replenishing needed supplies.

Patient Evacuation to access unburdened capacities outside the area.
(*Spirit Airport*)

In-Hospital Care in cooperating facilities that supplement saturated local resources.

Victim Identification / Mortuary Services focusing on forensic investigation or mass casualty management.

3) Mental Health Services

Mental Health Care including assessment, response and recovery interventions for victims and workers.

4) Environmental Health

Worker Health / Safety; protecting health and well-being.

Vector Control focusing on vector born disease.

Potable Water / Wastewater / Solid Waste Disposal assuring these life-line capacities.

Veterinary Services dealing with at-large animals and providing care.

Radiological / Chemical / Biological Hazard Consultation including decontamination, consequence management, and technical support to recovery efforts. (*Fire Service coordinator*)

5) Other projected responsibilities

Arrangements for medical transportation should be made at the lowest levels possible. Normally, local transportation requirements are to be handled by local authorities. (*Spirit Airport*)

Arrangements for medical facilities are primarily a local function.

The American Red Cross will provide limited, supplemental medical care in mass care shelters and other sites deemed necessary, subject to the availability of staff, relying on local resources first

The capacities of the National Disaster Medical System (NDMS) to provide initial and definitive care and evacuation of patients is accessed through State and FEMA authority and will supplement the initial response by local resources.

Coordinating health and medical resources needed to respond to public health and medical care needs prior to, during and following a disaster.

Coordinate medical support to mass care facilities.

Coordinate all aspects of communicable disease monitoring, surveillance and mass prophylaxis operations.

Monitor environmental health activities regarding food, water and solid waste debris.

Primary Department:
Department of Health

Assisting Departments:
Office of Emergency Management
St. Louis County Police Department
Spirit of St. Louis Airport

Assisting Agencies:

Missouri Department of Health and Senior Services
U. S. Department of Health and Human Services
Missouri Hospital Association
Missouri 1 DMAT (Disaster Medical Assistance Team)
American Red Cross
Center for Disease Control and Prevention
Fire Districts / Departments
Metropolitan St. Louis Sewer District (MSD)
Missouri American Water Company

Memoranda, Contracts, Other Agreements:

7. Animal Services ESF

Responsibilities:

- 1) Coordinate domestic animal response and relief efforts with the *St. Louis County Department of Parks and Recreation*.

Primary Department:
Department of Health

Assisting Departments:
Office of Emergency Management
Department of Parks and Recreation

Assisting Agencies:
State Emergency Management Agency
Humane Society
Animal Protective Association

Memoranda, Contracts, Other Agreements:

8. Communications ESF

Responsibilities:

- 1) Coordinating actions to be taken to assure the arrangement of required communications (miniature radios) and telecommunications (computer and telephone systems).
- 2) Provide support to disaster personnel and coordinate communications efforts specifically with the *St. Louis County Department of Highways and Traffic* who will have a large contingent of personnel operating in stricken areas.

Coordinating the activation of warning systems and restoration of essential communications systems.

Will utilize, as needed, the dispatch and computer capability of the *St. Louis County Department of Parks and Recreation*.

Primary Department:

St. Louis County Police Department, Bureau of Communications

Assisting Departments:

Office of Emergency Management
Department of Highways and Traffic
Department of Parks and Recreation

Assisting Agencies:

State Emergency Management Agency
Federal Communications Commission [FCC]
Radio Amateur Civil Emergency Service [RACES]
Civil Air Patrol [CAP]
Missouri National Guard [MoNG]
Fire Districts / Departments
Dispatch Centers

Memoranda, Contracts, Other Agreements:

9. Public Information ESF

Responsibilities:

Coordinating emergency public information system.

Determining and supporting a single Public Information Officer.

Establishing a Joint Information Center.

Formulation and approval of all media releases.

Primary Department:
St. Louis County Police Department

Assisting Departments:
Office of County Executive
All County Departments

Assisting Agencies:
State Emergency Management Agency

Memoranda, Contracts, Other Agreements:

10. Law Enforcement ESF

Responsibilities:

Establish procedures for the command, control and coordination of law enforcement agencies including the utilization of *St. Louis County Departments of Justice Services, Judicial Administration and Parks and Recreation*.

Work with the Missouri National Guard to support security missions and other law enforcement agency activities.

Respond to and through the "Code 1000" mutual aid agreement for the activation and coordination of law enforcement assets.

Primary Department:
St. Louis County Police Department

Assisting Departments:
Office of the County Executive
Office of Emergency Management
Department of Justice Services
Department of Parks and Recreation
Department of Judicial Administration

Assisting Agencies:
Missouri National Guard
Missouri Highway Patrol
St. Louis County Municipal Police Departments
U. S. Department of Justice

Memoranda, Contracts, Other Agreements:

11. Resource Support

Responsibilities:

Supplemental logistic coordination and support to all entities rendering services. Expenditures and materials, equipment and facilities acquisition and replacement will be coordinated and tracked thru the *St. Louis County Department of Administration*.

Operational support for Incident Command and Control, as needed.

Primary Department:

Office of Emergency Management

Assisting Departments:

Department of Administration
Department of Highways and Traffic
Department of Justice Services
Department of Parks and Recreation
Spirit of St. Louis Airport

Assisting Agencies:

State Emergency Management Agency
U. S. Army, Corps of Engineers
Fire Districts / Departments

Memoranda, Contracts, Other Agreements:

12. Energy

Responsibilities:

Coordinating the provision of emergency power to support emergency response and recovery efforts and normalized community functions.

Provide electric generators, distribution systems, fuel and related equipment.

When necessary, coordinate the movement of equipment, machinery and fuel with the *St. Louis County Department of Highways and Traffic*.

When necessary, coordinate the storage of equipment, machinery and fuel with the *St. Louis County Department of Parks and Recreation*.

Primary Department:

Office of Emergency Management

Assisting Departments:

Department of Department of Highways and Traffic
Department of Parks and Recreation

Assisting Agencies:

Missouri National Guard
U. S. Army, Corps of Engineers
Ameren U. E.

Memoranda, Contracts, Other Agreements:

13. Food and Water

Responsibilities:

Locating, procuring and transporting food, water and ice where needed to support workers and victims.

Assisting in the preparation and distribution of food.

When necessary, coordinate with *St. Louis County Department of Parks and Recreation* to locate within the county parks adequate areas to provide for the establishment of sites to feed large numbers of victims, volunteers and disaster response personnel.

Primary Department:

Department of Health

Assisting Departments:

Department of Parks and Recreation

Assisting Agencies:

Missouri National Guard
U. S. Department of Defense
U. S. Army, Corps of Engineers
American Red Cross

Memoranda, Contracts, Other Agreements:

14. Business and Industry

Responsibilities:

Provide for the exchange of information between government emergency management agencies and private corporations and business groups.

Facilitate corporate evacuations and re-entries. Policies regarding this issue will need the input of the *County Executive* and the *Economic Council*.

Coordinate with the *St. Louis County Police Department* and other law enforcement agencies responsible for security at and around evacuated businesses.

Provide education and training to corporate employees and coordinate the flow of private relief and recovery resources into impacted areas.

Identify potential sources of relief and recovery materials and supplies available through the private sector.

Primary Department:

Office of Emergency Management

Assisting Departments:

Office of the County Executive

St. Louis County Police Department

St. Louis County Economic Council

Assisting Agencies:

State Emergency Management Agency

Mid-America Contingency Planning Forum

Fire Districts / Departments

Memoranda, Contracts, Other Agreements:

15. Military Support

Responsibilities:

Providing logistical and operational support for specific tasks, resources, and responsibilities supporting military assets in St. Louis County during a disaster.

Provide liaison and facilitation support to integrate military assets with other support functions.

Coordinate information and provide communications liaison to military assets and local counterparts.

The *St. Louis County Police Department* will interoperate with the military assets dispatched to a stricken area for the purpose of augmenting

security duties and establishing martial law if authorized.

Primary Department:

Office of Emergency Management

Assisting Departments:

Office of the County Executive

St. Louis County Police Department

Assisting Agencies:

State Emergency Management Agency

Missouri National Guard

Federal Emergency Management Agency

5th U. S. Army, San Antonio TX

Memoranda, Contracts, Other Agreements:

16. Firefighting

The responsibility for providing fire services lies with local government and political subdivisions within St. Louis County. Twenty-four Fire Protection Districts and 18 Municipalities have fire departments. The responsibilities of fire services in disaster situations are basically the same as in their daily operations, with primary responsibility being firefighting. On a regular basis, fire services also are responsible for search and rescue operations, emergency transport of sick, injured, and emergency management of hazardous materials (HAZMAT).

Disaster operations differ in that fire services may be called upon to perform additional tasks and will have to coordinate their operations with other disaster response forces. If it becomes necessary to bring the EOC (primary or alternate) to full staffing level, designated members of the Greater St. Louis Fire Chiefs Association shall represent the fire services within St. Louis County.

The fire service will need to coordinate their efforts with the *St. Louis County Department of Highways and Traffic* in order to remain abreast of road closures.

In the event a disaster scene has indications of criminal activity or requires comprehensive security measures, the efforts of the *St. Louis County Police Department* may or will be required.

Responsibilities:

Firefighting activities and support services that include:

Suppression
Investigations
Code compliance
Training

2) Service areas that include:

Urban
Suburban
Rural
Wild-land
Combinations

Primary Provider:

Fire Protection Districts and Departments

Assisting Departments:

St. Louis County Police Department
Department of Highways and Traffic
Office of Emergency Management

Assisting Agencies:

Missouri Department of Public Safety
U. S. Department of Agriculture, Forest Services

Memoranda, Contracts, Other Agreements:

17. Search and Rescue

Responsibilities:

- 1) Search for, locate, rescue and render emergency medical services to victims.
- 2) Provide services in environments that include:
 - Confined spaces
 - Collapsed structures
 - Urban
 - Suburban
 - Rural

With the cooperation and coordination of the *St. Louis County Departments of Police, Parks and Recreation and Highways and Traffic*, there are some specialized vehicles available to assist with these tasks. In addition to personnel trained to accomplish rescue missions, the *Parks Department* has horses, all terrain vehicles (ATV's), four-wheel drive vehicles and boats at their disposal. They also have a communications link within their Department

that is compatible with the other county government agencies most likely to respond to an incident requiring this task.

Primary Provider:

Fire Protection Districts and Departments

Assisting Departments:

Office of Emergency Management
St. Louis County Police Department
Department of Parks and Recreation
Department of Highways and Traffic

Assisting Agencies:

Missouri Task Force One, Boone County Fire
Federal Emergency Management Agency
Missouri State Highway Patrol
Missouri Wing of Civil Air Patrol

Memoranda, Contracts, Other Agreements:

18. Hazardous Materials

Responsibilities:

- 1) Coordination of response to contain an actual or potential discharge or release of hazardous materials resulting from natural or technological emergencies.
- 2) Provide technical advice and direction for the protection of the public. Coordinate this effort with the *St. Louis County Police Department* when necessary in order to assure the proper distances for protective lines are established and maintained.

Insure that environmental consequences are addressed with the *St. Louis County Department of Health*.

Coordinate *Medical Examiner* response if necessary.

Primary Provider:

Hazardous Materials Emergency Response Team, St. Louis County

Assisting Departments:

Office of Emergency Management
St. Louis County Police Department
St. Louis County Department of Health

Assisting Agencies:

Missouri Department of Natural Resources
U. S. Environmental Protection Agency

Memoranda, Contracts, Other Agreements:

B. Task Assignments**Responsibilities of St. Louis County Government Department Directors**

Upon becoming aware of an emergency or threat thereof, the St. Louis County Executive shall designate to which EOC, primary or alternate, the County Government's Department Directors and Department Disaster Coordinators should report for assessment of the situation.

The following tasks and activities are to be performed by every Department or Office as components of the BEOP and its Annexes.

1. Develop a system for alerting all Department personnel of impending emergency situations that includes the following components:
 - a. A specific notification and recall plan for all Department staff and particularly all that have assigned duties in an emergency.
 - b. Identified sections, units and individuals that fulfill specific Emergency Support Functions.
 - c. When notified of the emergency situation, the Director shall initiate the Department's notification/recall procedures in order to alert and mobilize sections or individuals of the Department, as might be necessary.
2. Maintain a current line of succession for leadership of Department functions if key personnel are unavailable.
3. Designate a primary assembly site or staging area to which Department staff will report when recalled, either to stand-by for general assignments and duties or for specific predetermined tasks. If it becomes necessary for the continuation of Department critical missions, identify those facilities deemed necessary to Department operations and assist the Department of Public Works in determining the work area requirements of each in order to facilitate relocation to an alternate location. Facility must be initially capable of providing for the continuation of mission critical services and subsequently the restoration of services normally delivered by the Department. If applicable, equip with backup power supplies or modify to easily accept power supplies provided by external sources.

4. Designate an alternate mobilization site or procedure for every Department staff person and define the circumstances under which it should be used as an alternative to the primary site.
5. Designate a Disaster Coordinator who is a knowledgeable, senior-level employee who is well versed with the Department's organization, functions, operations and resources. This person should have a complete knowledge of all Department Emergency Support Function roles and has the authority to make or relay administrative decisions to assure ESF's or other directives are fulfilled. The designated Disaster Coordinator will serve as the Department's primary point of contact for all matters relating to disaster plans and operations.
6. Develop and maintain plans to respond in the event of the activation of the Emergency Operations Center. Provide for the mobilization of the Director, Disaster Coordinator and any alternates and other staff liaison to the EOC. Support the mobilization with a preliminary assignment of duties. Immediately upon receipt of the emergency notification, and as directed by the County Executive or the Chief of the St. Louis County Police Department, the department's Director and the Disaster Coordinator or the Alternate Disaster Coordinator shall report to the EOC or alternate site, to meet with the County Executive to coordinate the County's ESF's as needed for the specific emergency.
7. Develop and maintain plans for the Director to serve on the Executive Policy Group or provide appropriate alternates to assure 24-hour representation. The Department's primary representative shall be the Director or Disaster Coordinator.
8. Identify critical assets of the department that would be required to provide ESF's and establish procedures to develop, maintain and protect these assets.
9. Identify vital records necessary for the resumption and continuation of Department and County Government operations and make preparations for the off-site storage and retrieval of backup records.
10. Develop and maintain a current inventory of important files, reference materials, equipment, supplies, etc., that should be given priority status for retrieval if the opportunity is limited.
11. Develop capabilities to respond as a Department to decisions made by the Disaster Operations Advisory Team at the EOC or alternate sites, using information and data prepared in advance or collected from real-time sources, collected and analyzed, summarized and reported as factual information to the County Executive, State or Federal agencies as requested or deemed

appropriate.

12. Develop and maintain capacities to coordinate or support ESF's as assigned to the Department, before, during and following emergencies or disasters.
13. Make necessary advance provisions for liaison with other local governments, agencies, organizations or commercial sources of resources required to provide or coordinate ESF's or otherwise respond to emergency situations. Establish all linkages to State government required to access external resources from the State or Federal government.
14. When requested, provide the St. Louis County Police Commander of the Office of Emergency Management with support in the form of personnel, technical assistance, equipment, etc.
15. Develop and maintain procedures to receive and announce warnings of a life-threatening danger in any Department facility. Alert the proper authorities and gain assistance, supporting the warning with appropriate plans to protect employees and others present.
16. Develop and maintain evacuation and sheltering plans for all Department facilities.
17. Exercise and evaluate plans as necessary to assure reliability of performance of ESF's and other Department responsibilities.
18. Report any damage of department facilities, equipment, or resources to the EOC.
19. Account for all Department expenditures of funds, personnel and equipment, as well as expenses incurred by damage or loss during the emergency.
20. Provide Public Information Officers or support personnel to the Joint Information Center, as required or requested.
21. Return department activities to normal levels as soon as possible, unless involved with recovery activities

Duties of Specific County Government Officials

Duties and responsibilities shall be as specified in the Revised Ordinances of St. Louis County. Special emergency-related responsibilities shall be as listed below.

St. Louis County Executive

1. Accept ultimate responsibility for Direction and Control (**Annex A**) over St. Louis County Government activities related to emergencies, and the concurrent continuity of government.
2. Execute powers bestowed under the provisions of State of Missouri Statutes, Chapter 44, Civil Defense, as the chief elected official of St. Louis County Government.
3. Determine when the County Executive Policy Group shall be convened and determine/approve of the agenda that this team shall consider.
4. Act as the promulgating authority for this plan.
5. Formulate major policy decisions.
6. Make emergency proclamations when needed.
7. Request support from the State Emergency Management Agency when needed.
8. Support response and recovery activities as required.
9. Return department activities to normal levels unless involved with recovery activities.

St. Louis County Council/Clerk

1. Provide for continuity of the County Council in order to continue legislative duties.
2. Maintain a constant liaison at the EOC.
3. Pass ordinances and motions pursuant to emergency proclamations; and appropriate revenue and expenditures as needed for disaster mitigation, preparedness, response and recovery.
4. Provide for auditing of the emergency financial operations of county government and for emergency performance audits.
5. Assist in public information and the dissemination of emergency information through County Council offices, coordinated with EOC, Joint Information Center and Public Information Officers of affected jurisdictions.
6. Provide public information officers or support personnel to the JIC as required.

7. Re-establish council operations.
8. Support response and recovery activities as required.
9. Approve emergency gifts, grants, or loans accepted by the County Executive.

St. Louis County Counselor

1. Designate staff to respond to the EOC to support the County Executive with legal oversight and advice.
2. Maintain a constant liaison at the EOC.
3. Review all actions contemplated and taking place in the field and in the EOC to ensure propriety, and to recommend resources to accomplish necessary actions that can best avoid contentious entanglements or possible litigation.
4. Recommend the timing for and supervise the drafting of all proclamations and executive orders.

Commander, Office of Emergency Management

1. Prepare and update this plan and coordinate the development and maintenance of department annexes created to support the tenets of this plan.
2. Make recommendations to the County Executive and to the members of the County Disaster Operations Advisory Team on policy, procedural, and operational matters relating to emergency management.
3. Submit an annual Statement of Work and quarterly progress reports to SEMA.
4. Maintain readiness of the EOC, to include activation call-out tests, regular checks of warning systems, communications, back-up power; maintenance of supply stocks and housekeeping.
5. Provide 24-hour Staff Duty Officer support.
6. Deliver emergency preparedness training and public education programs.
7. Provide emergency preparedness planning guidance to all County departments.

8. Oversee the maintenance of the St. Louis County Basic Emergency Operations Plan.
9. Maintain a Geographic Information System (GIS) mapping capability, to include overseeing the up-to-date status and provisioning of situation maps and resource lists.
10. Responsible for emergency resource management programs, including maintenance of an automated emergency resource database.
11. Manage Radiological Defense (RADEF) programs.
12. If available time does not permit prior coordination with the County Executive or other authorities, take action to implement existing warning procedures.
13. Serve as coordinator of the St. Louis County Local Emergency Planning Committee (LEPC) and as such facilitate the County's compliance with all components of the Superfund Amendments Reauthorization Act (SARA).

Director, Department of Administration

1. Prepare and update **Annex B** to this plan, to include SOP's covering the conduct of assigned emergency functions.
2. Coordinate expenditures, acquisition and provisioning of materials, equipment and facilities needed in the course of emergency response and recovery operations.
3. Maintain a standardized mechanism for all departments to track expenditures of funds, personnel and equipment, as well as expenses incurred by St. Louis County due to damage or loss during emergency operations. This standardized report system shall include expenditures related to emergency response and long-term recovery activities.
4. The Risk and Insurance Management Section shall maintain current and up-to-date property lists to include replacement costs on real property and contents value. Will maintain a list of all currently in-force insurance policies with a list of brokers and agents.
5. Determine and oversee the administration of procedures for classifying, registering, identifying, and compensating emergency workers, public and volunteers (including emergency citizen groups).
6. Administer centers where emergency citizen volunteers can register and be

assigned jobs that effectively match individual skills to emergency operational needs.

7. Designate staff to respond to the EOC to support the emergency management staff.
8. Oversee the collection of information on, and supervise the processing of, personal injury and casualty claims.
9. Assist departments in replacing essential personnel who have become casualties or are otherwise unable to fulfill their emergency work assignment.
10. Develop a means to provide support to the families of County employees who have suffered a loss due to the disaster event. Develop a telephone based information system that can be used by County employees to retrieve special instructions or information regarding disaster response and recovery conditions and emergency scheduling information.
11. Provide risk management services as soon as possible.
12. Ensure that adequate insurance is carried on all County assets.
13. Provide telephone services to county departments and offices for emergency operations.
14. Provide duplicating, printing, copying, graphic and audio-visual services for County departments and offices conducting emergency operations.
15. Provide selected personnel and vehicles for courier and messenger service to the EOC, as required.
16. Provide licensing services as soon as possible following the disaster event.
17. Provide inter-department mail service as soon as possible.
18. Provide personnel to record and protect all documents (incident reports, logs, etc.), relevant to the disaster event.
19. Report any damage of department facilities, equipment, or resources to the EOC.

Director, Department of Health

1. Prepare and update **Annex C** to this plan, to include SOP's covering the conduct of assigned emergency functions.

2. Coordinate and facilitate the delivery of medical support in public shelters.
3. Coordinate and facilitate medical support to homebound patients with emphasis on elderly citizens and those with special medical needs.
4. Coordinate and provide for special health advisories.
5. Coordinate and facilitate the acquisition of medical/pharmaceutical supplies during major emergencies.
6. Coordinate outpatient clinic operations at the County's three clinics.
7. Coordinate all aspects of a communicable disease monitoring and control operation.
8. Coordinate and provide for morgue and appropriate burial requirements with the Missouri Funeral Directors Association.
9. Upon request, respond to, and provide St. Louis County Government with technical advice concerning the specific hazards related to hazardous material (HAZMAT) incidents.
10. Coordinate the delivery of psychological counseling services throughout the entirety of all emergency operations. The provision of these services should include on-going debriefings of emergency workers, as well as post disaster related intervention within the general population.
11. Coordinate the continuous monitoring of water systems under emergency conditions, which may include the disruption of sanitary or fresh water systems.
12. Coordinate and provide emergency health services, including communicable disease control, immunizations and quarantine procedures.
13. Coordinate and provide environmental health services, including inspections for water and food contamination, vector control, inspections of temporary emergency housing and schools for proper sanitation, and disposal of disaster related solid waste.
14. Provide for the investigation and determination of causes of sudden, unexpected, and/or non-natural deaths. Coordinate, carryout, and oversee the recovery, identification, and examination of victims of mass fatality incidents. Assist in arranging for storage and appropriate disposition of deceased persons. Assist, as needed, in the coordination of public information on identification and confirmation of deceased disaster

victims.

15. Conduct public information and education programs on emergency health treatment, prevention and control programs.
16. Maintain vital records, including collection and recording of environmental health, public health and death data and information for a required operational report.
17. Provide animal control services and shelters within the extent of Department resources.
18. Provide for media distribution, a database of captured animals held in animal shelters.
19. Assist the Red Cross and St. Louis County Parks in establishing shelters by identifying and coordinating pet control areas.
20. Provide representatives to the EOC as required.
21. Provide Public Information Officers or support personnel to the JIC as required.
22. Support response and recovery activities as required.
23. Return department Public Health activities to normal levels as soon as possible, unless involved with recovery activities.

Director, Department of Highways and Traffic

1. Prepare and update **Annex D** to this plan, to include SOP's covering the conduct of assigned emergency functions.
2. Maintain complete equipment and personnel resource listings as required to support this plan.
3. Develop and operate a Department communications system in support of emergency operations.
4. Assist St. Louis County Police Department with traffic movement control associated with present arterial road system.
5. Identify those facilities deemed critical to Department emergency operations and equip with backup power supplies or modify to easily accept power supplies provide by external sources.

6. Identify structural assets, which must receive priority status regarding post-disaster inspections. (Ex. bridges, overpasses that service critical facilities such as hospitals, Department hazardous waste storage sites, etc. located in areas identified as high-risk).
7. Assist the County Government's emergency management activities by assuring the accessibility of fuel delivery equipment for County emergency vehicles.
8. Maintain arrangements with local private vendors for the delivery of emergency equipment unique to the accomplishment of Department emergency responsibilities.
9. Maintain a cadre of individuals educated in aspects of engineering, which will allow the Department to assume primary responsibility and control over bridge and road deck inspections and damage assessment procedures.
10. Determine possible methods of safely disposing of inordinate amounts of roadway debris.
11. Inspect and strengthen existing Department mechanical system equipment deemed critical to emergency operations.
12. Conduct non-structural bracing programs to secure those elements of Department owned facilities that are possible falling hazards to employees, equipment, machinery and other resources.
13. Report any damage of roads, bridges, department facilities, equipment, or resources to the EOC.
14. Coordinate and provide for the maintenance, repair, construction or restoration of damage or destroyed County roads, bridges, and transportation facilities.
15. Direct, control, and manage sandbag resources for St. Louis County government.
16. Provide facilities, personnel, vehicles, heavy equipment and supplies, to assist St. Louis County in disaster planning, emergency operations, response and recovery.
17. Provide public information officers or support personnel to the JIC as required.
18. Return departments traffic and maintenance activities to normal levels unless involved with recovery activities.

Director, Department of Human Services

1. Prepare and update **Annex E** to this plan, to include an SOP covering the conduct of assigned emergency functions.
2. Maintain a complete list of social service agencies and organizations in the St. Louis Metropolitan Area, to include resources available and accurate telephone listings of persons in charge of the respective agencies who can be contacted for assistance in the event of an emergency.
3. Recruit and provide volunteer personnel to augment the disaster relief programs of the American Red Cross and Salvation Army.
4. Coordinate with Missouri Division of Family Services any special measures necessary to manage the special needs of children estranged from parents during an emergency.
5. Identify and designate certain County Government owned facilities that could serve as congregate lodging shelters without causing a disruption of, or delay in resumption of, County Government services or obligations.
6. Locate throughout the County suitable facilities that can be adapted to serve as Disaster Assistance Centers. These facilities should be designated according to population concentration and transportation accessibility.
7. Establish a citizen Disaster Assistance Center during an emergency to answer questions regarding emergency services and/or the resumption of government services following a disaster.
8. Provide for Department representation in the Disaster Assistance Centers established as a part of disaster recovery operations.
9. During emergency operations, cooperate with the American Red Cross, Department of Planning and the St. Louis County Housing Authority for the provision of information regarding the number and location of temporary shelter and relocation sites.
10. Provide for the recruitment, allocation, and general management of labor forces required during emergency operations, to include managing the staffing requirements of the EOC.
11. Provide for the identification, recruitment, and allocation of St. Louis County employees for emergency operations in coordination with directors of St. Louis County departments.

12. Plan for and develop procedures to manage emergent volunteers.
13. Provide personnel to staff telephone lines in order to recruit and develop databases on citizen and private sector volunteers.
14. Coordinate the logistical needs of items donated to the effort. This will include distribution and status reporting.

Director, Department of Judicial Administration

1. Prepare and update **Annex I** to this plan, to include SOP's covering the conduct of assigned emergency functions.
2. Identify those functions deemed critical to Department mission and determine the work area requirements of each in order to facilitate relocation to an alternate location.
3. Develop a mechanism to account for all Department expenditures of funds, personnel, equipment, as well as expenses incurred by damage or loss during emergency.
4. Maintain a court docket and insure that imperative legal proceedings continue throughout all emergency operations. Develop systems to assure the availability of personnel necessary for the continuation of court proceedings and record keeping.

Director, Department of Justice Services

1. Prepare and update **Annex F** to this plan, to include the SOP's covering the conduct of assigned emergency functions.
2. Provide security, sheltering, feeding and emergency medical care of prisoners at the County's confinement facilities during emergency conditions.
3. Coordinate with the St. Louis County and municipal police departments, the American Red Cross and fire protection districts for the security, sheltering, feeding and emergency medical care of prisoners if it becomes necessary to evacuate them from one or all of the County's confinement facilities.
4. When necessary and if practical, provide a minimal food service staff at the EOC when that facility is staffed for emergency operations.
5. Identify and arrange for an adequate amount of equipment and supplies to

be delivered to sites designated as confinement/relocation facilities. Coordinate with other County and social service agencies to assure the availability of equipment and prioritization of delivery.

6. Coordinate with the Department of Judicial Administration regarding the selection of low-risk inmates that may be candidates for “furloughing” during periods of prisoner evacuation and confinement in temporary holding facilities.
7. Continue to operate the County courts as efficiently as possible in order to maintain due process of law in civil and criminal justice matters.

Director, Department of Parks and Recreation

1. Prepare and update **Annex G** to this plan, to include the SOP's covering the conduct of assigned emergency functions.
2. Responsible for providing specialized emergency equipment and response teams to the Director, Department of Highways and Traffic.
3. Responsible for emergency rescue teams in coordination with the Chief, Department of Police, and local fire services.
4. Provide County Park Rangers to supplement County Police Department officers in the security and traffic control functions related to emergency operations.
5. Pre-determine potential uses of all Department facilities during emergency operations. Designate primary function for each site to assure maximum utility and avoid duplication of facility space usage. This applies to open space land and other grounds that may be utilized as shelter areas or resource storage/distribution points.
6. Research and develop procedural guidelines which include necessary supplies and equipment needed to establish temporary trailer cities at park locations determined to be adequate for that purpose. Include orders for personnel, transportation access and utility service provisions.
7. Develop guidelines to assign employees standing orders for emergency response locations and schedules. Establish primary and secondary duty functions for each employee or work group to include search and rescue, security and damage assessment assignments.
8. Identify Department structures that must receive priority status regarding post-event inspection. (Ex: critical communications facilities, buildings, etc., located in areas identified as high-risk.)

9. Coordinate efforts with the Department of Public Works regarding the demolition of, and/or removal of debris from damaged historical sites or properties owned by the County and/or state or federal agencies.
10. Assist the American Red Cross in providing for the care and welfare of people displaced from their homes. Make available county park facilities, equipment, and personnel for providing emergency shelter and feeding needs in coordination with the American Red Cross.
11. Provide personnel to conduct on-site inspections of park property and facilities to determine damage and safety.
12. Collect information and compile data for operational reports necessary to emergency operations.
13. Provide personnel and equipment available to support the emergency operations of other county departments and agencies consistent with capability.

Director, Department of Planning

1. Prepare and update **Annex H** to this plan, to include the SOP's covering the conduct of assigned emergency functions.
2. Coordinate the gathering of data collected by the various departments in St. Louis County Government. Develop an accurate and comprehensive report to the County Executive, State or Federal Authorities, regarding resource expenditures in the cause of emergency response and recovery operations.
3. Assist the Director, Department of Public Works, in site plan review for expedient reconstruction projects following any large-scale emergency.
4. Develop emergency legislation regarding the establishment of mobile home parks to serve as long-term temporary housing sites and designate sites throughout St. Louis County to accommodate mobile home units that may be delivered by the federal government.
5. During emergency operations, provide various maps showing land usage and zoning designations, district boundaries, assessors and real estate data, and other information of use to the overall disaster coordination effort.
6. During emergency operations, cooperate with the Department of Human Services by providing information regarding the number and location of hotels and motels that may serve as temporary relocation sites.

7. Identify appropriate sites throughout St. Louis County to serve as emergency debris processing sites, and other sites adequate for the safe disposal of inordinate amounts of debris that may result from structural demolition requirements.

Chief, Department of Police

1. Prepare and update **Annex J** to this plan, to include the SOP's covering the conduct of assigned emergency functions.
2. Provide protection of life and property, overall security, traffic control, and other law enforcement functions at the scenes of any large-scale emergency.
3. Protect facilities designated as critical or vital to emergency operations and limit access to these areas.
4. Establish security controls to inhibit the looting of damaged or evacuated homes or businesses.
5. Assist in rapid damage assessment operations by utilizing patrol officers equipped with mobile communications equipment.
6. Provide technical expertise and trained personnel to conduct counter-terrorism operations.
7. Responsible for area evacuation operations.
8. Establish an on-scene Area Command Center at any large- scale emergency operation.
9. Disseminate emergency condition warnings to the general public through the activation of the St. Louis County Emergency Warning System.
10. Through the Office of Emergency Management provide assistance in determining radiation levels resulting from transportation accidents involving radioactive materials.
11. Through the Office of Emergency Management provide assistance in determining unsafe levels of contamination involving hazardous materials spills and/or terrorist WMD events.
12. Activate St. Louis County Police Reserve Officers to supplement St. Louis County Police Officers.
13. Provide for surveillance and coordination of response efforts at emergency

scenes.

14. Provide the one focal point in St. Louis County Government for disseminating news releases concerning the emergency to the news media, and through which the media shall funnel their requests for information.
15. Provide linguists who can help provide warnings and other emergency management information to non-English speaking persons, and to the deaf and hearing impaired.
16. Provide facilities and communications equipment for the operation of St. Louis County's primary and alternate EOC's in Chesterfield and Wellston.
17. Provide notification to the Directors of other Departments of St. Louis County Government of the emergency condition that may require their presence at the primary or alternate EOCs.
18. Provide liaison with local, federal and state law enforcement agencies, as well as with the:
 - City of St. Louis
 - County's municipal police departments
 - Sheriffs' Offices of adjacent counties.
19. Responsible for calling upon municipal police departments for assistance under the provisions of Revised Ordinances of St. Louis County, Chapter 701, Section 701.200, Mutual Aid agreements, and/or Code 1000, when needed.
20. Coordinate the use and assignment of private security officers to assure the most effective supplementation of County/municipal police agencies and to control the distribution of the resource.
21. Direct and control the use of available resources required to conduct search and rescue operations.
22. Provide helicopter and precinct assets for the EOC if available to conduct Rapid Damage Assessment immediately following a disaster event.
23. Support response and recovery activities as required.

Director, Department of Public Works

1. Prepare and update **Annex K** to this plan, to include the SOP's covering the conduct of assigned emergency functions.

2. Maintain public buildings and expropriated private structures that have been determined necessary to house County residents in order to alleviate suffering during and after an emergency situation.
3. In the aftermath of an emergency, serve as the County's Damage Assessment Coordinator and assist other County Departments in rescue and debris removal operations by providing technical information regarding structural safety concerns.
4. Coordinate water and sewer service priorities, refuse disposal and emergency interment with the Department of Health.
5. Coordinate the activities of the public utilities and provide the utility companies with any special guidance from St. Louis County pertaining to priorities of restoration of essential and secondary services.
6. Provide assessment of asbestos contamination in County facilities following disaster related structural damage. Determine priorities given the need for abatement procedures.
7. Identify those facilities deemed critical to Department emergency operations and equip with power supplies or modify to easily accept power supplies provided by external sources.
8. Account for all Department expenses of funds, personnel, equipment, as well as expenses incurred by damage or loss during emergency.
9. Conduct non-structural hazard bracing inspection programs for mission critical elements of County owned facilities. Program will inventory and prioritize those mission critical elements and provide data to each participating department head.
10. Coordinate the activities of volunteers, certified and registered by SEMA, educated in structural engineering and architectural disciplines, who could rapidly assess the safety of earthquake damaged structures.
11. Maintain and update a building inspection procedure that includes standards for structural integrity of earthquake damaged buildings.
12. Identify structures that must receive priority status regarding post disaster inspections. (Ex. critical communications towers, levees, hazardous material storage sites, etc., located in areas identified as high-risk.)
13. Maintain and update an "appeals" process for residents whose property, during inspection proceedings, has been condemned or deemed

uninhabitable.

14. Maintain and update systems to expedite the review of building/repair permit applications.
15. Maintain and update a marking system that indicates life safety designations for damaged structures. The system must include audit capabilities, registration procedures, etc.
16. Coordinate efforts with the Department of Parks and Recreation regarding the demolition of, and/or removal of debris from damaged historical sites or properties owned by the County and/or state or federal agencies.
17. Provide personnel, equipment, and facilities as required to support County emergency management operations. Resources provided include facility acquisition for alternate EOC's, and equipment, supplies and skilled workers to perform construction, and maintenance tasks at County facilities.
18. Coordinate the abatement of dangerous buildings and structures.
19. Provide facilities management personnel to the EOC for damage assessment of County facilities.
20. Provide support to the EOC as needed during emergency operations.

Director, Department of Revenue

1. Prepare and update **Annex L** to this plan, to include the SOP's covering the conduct of assigned emergency functions.
2. Responsible for recovery operations following an emergency by assisting the agencies of County Government which might require mapping services, or real estate information.
3. Identify property owners through the Recorder of Deeds.
4. Account for all Department expenditures of funds, personnel and equipment, as well as expenses incurred by damage or loss during emergency.
5. Assist County Government's emergency operations activities by maintaining a computer-based information/mapping capability through use of the Geographic Information System (GIS).
6. Provide for the continuity of Department services by maintaining

representation in Disaster Assistance Centers established as part of ongoing disaster recovery operations.

7. Assist in damage assessment projects by providing detailed information regarding assessed valuations of private residences, businesses and other structural facilities.
8. Provide verification of designated flood zones and areas in order to confirm claims made by persons applying for disaster assistance.
9. Provide information regarding the value of commercial and personal property, in addition to real estate values.
10. Provide public information officers or support personnel to the JIC as required.

Director of Spirit Airport

1. Prepare and update **Annex P** to this plan, to include the SOP's covering the conduct of assigned emergency functions.
2. Maintain a constant liaison in the EOC.
3. Establish and operate a central staging /distribution point for disaster supplies, material and equipment which might be flown into St. Louis County for local support.
4. Provide technical assistance to the FAA, NTSB and local public safety authorities in the aftermath of a major commercial aircraft accident in St. Louis County.
5. Serve as technical advisor to the County Executive on matters of aerial operations within the airspace of St. Louis County during emergencies.
6. Coordinate the activities of military aerial operations as they apply to emergency operations within St. Louis County.
7. Serve as the St. Louis County liaison with private aircraft operators to facilitate expeditious delivery of emergency resources and personnel during emergency operations.
8. Provide alternate means of landing for aircraft weighing up to 150,000 lbs. when Lambert International Airport is out of service.
9. Maintain listings of tenants and available resources at Spirit Airport.

10. Conduct damage assessment procedures immediately after the occurrence of any event that causes possible or apparent structural damage or interruption of normal airport operations.
11. Coordinate with the FAA to re-establish air traffic control services in the event of a loss of the FAA tower at Spirit Airport.
12. Coordinate planning and response efforts of the Civil Air Patrol and the Missouri Pilots Association.
13. Coordinate with the FAA to control air space by issuing a "Notice to Airmen" designation restricting sections of St. Louis County airspace when needed.
14. Provide fuel to aviation resources providing support to emergency response efforts in St. Louis County.
15. Locate and designate adequate office space to serve as an alternate Department headquarters. Facility must be initially capable of providing for the continuation of mission critical services, and subsequently, the restoration of services normally delivered by the Department. If applicable, equip with backup power supplies or modify to easily accept power supplies provided by external sources.
16. Identify those facilities deemed critical to Department emergency operations and equip with power supplies or modify to easily accept power supplies provided by external sources.
17. Account for all Department expenditures of funds, personnel and equipment, as well as expenses incurred by damage or loss during emergency.

Commander, Bureau of Communications, Department of Police

1. In concert with the Office of Emergency Management prepare/update **Annex O** to this plan, to include the SOP's covering conduct of assigned emergency functions.
2. Serve as a member of the County Disaster Operations Advisory Team for matters relating to communications in emergency operations.
3. Designate a knowledgeable, senior-level employee who is well versed with the Bureau's organization, functions, operations, and resources to serve as the County Communications Specialist for Communications. The designated Communications Specialist shall serve as the Commander's primary representative when it becomes necessary to staff the County's

EOC.

4. Respond to the designated EOC, primary or alternate, to meet with the County Executive and coordinate the County's available courses of actions for emergency communications during the specific emergency.
5. See Annex J (Department of Police) to this plan for other emergency responsibilities assigned by the Chief of Police.

Media Relations Officer, Department of Police

1. Serve as a special member of the County Disaster Advisory Team for matters relating to public information, news releases to the media and rumor control in support of emergency operations.
2. Respond to the designated EOC, primary or alternate, to meet with the County Executive to coordinate the County's available courses of action for media contact and emergency public information during the specific emergency.
3. Given the type of emergency and the agencies involved, determine the appropriate composition of the Public Information Officer (PIO) Team.
4. Direct the PIO Team, the use of a Joint Information Center and the use of the Emergency Alerting System.
5. Act as the senior official through whom the drafting of all communications to the public and media are coordinated.
6. Obtain the County Executive's approval for the release of all information.
7. Coordinate the development and release of all press releases with the emergency management director.
8. Arrange public pronouncements and/or appearances by the County Executive.
9. See Annex J (Department of Police) to this plan for other emergency responsibilities assigned by the Chief of Police.

Supporting Volunteer Service Agencies and Organizations

Duties and responsibilities shall be as specified in their respective organizational charters and Mutual Aid Agreements (if applicable). As requested, the Bi-State Chapter of the American Red Cross, and the Salvation

Army will provide senior official representation to the Department of Human Services, the Department of Public Works and the Department of Health. They will coordinate their actions in delivery of the following humanitarian aid to local disaster victims:

1. Mass care/feeding
2. Potable water
3. Family assistance
4. Health services
5. Mental health services
6. Welfare inquiry communications

Utilities Support

Duties and responsibilities shall be as specified in their respective company charters. Operational procedures shall be in accordance with their respective SOP's. Restoration of services shall be the primary objective of the various utilities. The priorities used for determining the order of re-establishment of interrupted services shall be governed by steps necessary to save lives, safeguard health and protect property and by the severity and extent of the emergency situation. When requested, a senior management or operations official will respond to the EOC to represent their respective company. Each will be responsible for ensuring that company efforts to assess damages to their utility systems and to restore customer services is closely coordinated with and consistent with the County's efforts to manage the overall crisis.

Amateur Radio Support

As requested, amateur radio support will be used to offset expenditures in public agency communications, and/or to help relieve congestion on available County government operated frequencies. Most of this support will come from the County's existing and operational Radio Amateur Civil Emergency Services (RACES) program. Other volunteer groups will fall under their supervisory umbrella of operations. This includes other amateur radio organizations, citizens band groups and other volunteer organizations utilizing radio resources. As needed they will dispatch operators to command / satellite centers to relay damage assessment reports as well as provide dedicated communications to activated shelters to provide registration and status reports for assistance requests to the EOC.

VIII. COMMAND AND CONTROL

A. Structure

The emergency preparedness and response of St. Louis County shall be organized as follows:

1. The head of the emergency mitigation, preparedness, response and recovery efforts shall be the County Executive. Direction and Control of the emergency mitigation, preparedness, response and recovery effort shall be vested in the County Executive who, assisted by the Executive Policy Group, Disaster Advisory Team, Emergency Management Office Staff, and Operations Group, shall be responsible for the prompt, efficient execution of the emergency management plan, or so much thereof as is necessary to:
 - a. Enforce all rules and regulations relating to Emergency Management.
 - b. Act as an agent of the Governor of the State of Missouri, and take control of all means of transportation (other than railroads, and railroad equipment and fuel) and supplies, and all facilities including buildings and plants. He will exercise all powers necessary to assure the safety and protection of the civilian population.
 - c. Request state and/or Federal assistance.
 - d. Establish a general curfew.
 - e. Close business and/or public establishments/areas.
 - f. Restrict the sales of alcohol, firearms and ammunition, and/or combustible products.
 - g. Prohibit the carrying of instruments capable of producing bodily harm.
 - h. Establish economic controls.
 - i. Direct the use of all public and private health, medical, and convalescent facilities, and their equipment, for emergency health and medical care of injured persons.
 - j. Controlling the operation of utility services.
 - k. Other orders as are imminently necessary for the protection of life and property.
2. St. Louis County disaster preparedness groups that respond to the County EOC are separated into three basic working personnel groups: Executive Policy Group; Disaster Advisory Team; Emergency Management Office Staff and Operations Group that represents separate functional areas of responsibility and facilitates the coordination of member's actions during a disaster.
 - a. Executive Policy Group

The Executive Policy Group is composed of the County Executive and Department Directors who will be directing the County's response to the emergency at hand. This group is the governing authority over the others within the EOC.
 - b. Disaster Advisory Team

A Disaster Advisory Team, composed of Department Disaster Coordinators and other department technical advisors, provide

expertise vital to the successful execution of disaster operations and assists the Executive Policy Group.

c. Emergency Management Office Staff

The Emergency Management Office Staff is comprised of the Commander of the Office of Emergency Management, OEM staff, and any other persons identified and assigned by the Commander. This staff will provide logistical support to the Executive Policy Group and the Disaster Advisory Team.

d. Operations Group

The Operations Group is comprised of representatives of the many governmental and non-governmental agencies necessary to ensure a complete and functional response to disaster situations. Present within the Operations Group will be the managers, supervisors and employees that are relied on by the disaster preparedness groups for response and recovery support.

B. Line of Succession

1. By law, only the County Executive has the authority to declare the existence of a State of Emergency in St. Louis County. If the County Executive is absent from the County at the time of an emergency or disabled to the extent that he cannot exercise the powers nor discharge the duties of that office properly, the following is established:

a. The line of succession will be according to the following stipulations set forth in the County Charter:

- Article III, Section 3.020 that reads: “A vacancy in the office of the county executive shall be filled by the council. The person so selected shall be a member of the same political party as the previous occupant. He shall hold the office until January 1 following the next general election. A successor shall be elected at the next general election for the unexpired or the full term as the case may be.”

and:

- Article III, Section 3.030 that reads: “During the county executive’s temporary disability or absence from the county, the chairman of the council shall be acting county executive until the next meeting of the council, at which time the council shall designate to serve as county executive one of its members who shall be of the same political

party as the county executive unless there be none of such party.”

C. Emergency Operations

When St. Louis County Government personnel are committed to and engaged in emergency operations within the boundaries of the County's unincorporated area, officials of County Government shall retain operational control and direction of emergency forces.

1. Mutual Aid Agreements

A. Mutual Aid II

When St. Louis County Government personnel are committed to, and engaged in, emergency operations within the boundaries of an incorporated municipality which has signed a Mutual Aid II contract with St. Louis County, the County Government shall exercise complete autonomy of management, control and supervision over the disaster relief operations. The St. Louis County Executive or his designated representative (the Commander of the Office of Emergency Management) shall be vested with full authority over, and control of, all disaster planning and relief measures within the given municipality. The chief elected official, or that official's designated representative for the given municipality, shall become a Deputy Disaster Director and shall assist the St. Louis County Executive or his designated representative in coordinating disaster relief operations.

Attachment IV to this plan lists those municipalities having Mutual Aid II agreements with St. Louis County.

B. Mutual Aid I

When St. Louis County Government personnel are committed to and engaged in localized emergency operations within the boundaries of an incorporated County municipality which has signed a Mutual Aid I contract with St. Louis County, the responsible local municipal official in charge of the operation shall direct all emergency forces.

Attachment VI to this plan lists those municipalities having Mutual Aid II agreements with St. Louis County.

Direction includes, but is not limited to:

- a. The assignment of tasks.
- b. Designation of objectives and priorities.
- c. Designation of responsibility for other actions, the

accomplishments of which are necessary to complete the mission.

2. Operational Control

St. Louis County shall retain operational control of its emergency forces committed in any municipality. Operational control of emergency forces includes, but is not limited to the overall authority to commit or withdraw personnel and resources from emergency operations. Established County Government Department authority over any given Department's committed forces will not be superseded except in extreme emergencies. Should the municipal official so desire, the Mutual Aid I contract affords him/her the opportunity to relinquish direction to St. Louis County officials.

When St. Louis County Government personnel are committed to and engaged in County-wide disaster operations, whether in municipalities or unincorporated areas, the St. Louis County Executive or his designated representative (the Commander of the Office of Emergency Management) shall be vested with full authority over, and control of, all disaster planning and relief measures.

3. County-wide Disaster

A "County-wide disaster" is a disaster, or threat of a disaster, which occurs simultaneously in more than one municipality and precipitates a declaration of the existence of a State of Emergency by the County Executive as per SLCRO 703.070. It can include several local disasters that occur so close together in time as to require prioritization of the allocation of resources and services available to the St. Louis County Office of Emergency Management. During the conduct of County-wide disaster operations when the County Executive or his designated representative is exercising overall control and direction, the chief elected official or other designated representative for each of the involved Mutual Aid I municipalities shall automatically become a Deputy Disaster Director. They will have responsibility for the disaster planning and relief measures for the geographic area comprising their own municipality. In the capacity of Deputy Disaster Director, they will act in accordance with the direction of the St. Louis County Executive (or his designated representative) in all matters that affect, or potentially affect, the general welfare of all residents of St. Louis County, Missouri.

4. Military Support

Officials of St. Louis County Government may determine that the County requires the assistance of Missouri Army and/or Air National Guard units during the conduct of emergency operations. If so, the St.

Louis County Commander of the Office of Emergency Management will notify the County Executive, who, if he concurs, must request such military assistance from the Governor of Missouri.

Requests for National Guard support will be submitted in writing to the Governor. In case of extreme urgency, requests may be made by the most expeditious means available through SEMA, and later confirmed in writing.

When units or individuals of the Missouri National Guard are ordered to State emergency duty in support of civil authorities, their orders will specify the general or specific missions and the local civil officer (e.g. County Executive, Mayor, Chief of County Police, Municipal Police Chief, etc.) to whom the National Guard Commander will report for direction and to receive the mission to be accomplished. Command, operational control, and accomplishment of the mission are the responsibility of the National Guard Task Force Commander. Civil authorities remain responsible for the general maintenance of law and order, and any other activities that may be required due to the emergency. Under these conditions, National Guard units and their personnel are considered to be "in support of civil authorities." All directives for the establishment of "martial law" will be at the determination of the civil authorities unless superseded by the Governor.

Commanders are responsible only to their superiors within the National Guard Chain of Command. When acting in support of civil authority, the commander(s) will accept missions from the appropriate civil authorities and execute those missions utilizing the methods and resources the National Guard commanders deem necessary.

The maintenance of law and order within a political subdivision is the responsibility of the local duly elected or appointed civil authorities. When National Guard Forces are ordered by the Governor to provide military support to those civil authorities, the National Guard forces will obey and execute that order with the understanding that they are assisting local authorities in the performance and accomplishment of their duties and functions. Civil officials are and will remain in charge, and will continue to exercise the normal functions of their particular office.

5. Levels of Activation

The Commander of the Office of Emergency Management shall designate what level of activation is required in response to a given situation, and shall ensure all steps for notification and operation are completed for that level of activation.

Level I:

Activation at this level will typically involve only the Emergency Management Office staff. This level is established to perform the regular situation analysis function utilizing the best information available for decision-making purposes.

Level II:

Level II encompasses the Level I activation staffing pattern and any individuals as may be designated by the Commander of the Office of Emergency Management required to address specific emergency situations. The Commander of the Office of Emergency Management may activate portions of this plan in preparation of an anticipated response need.

Level III:

Level III requires the involvement of each of the St. Louis County disaster preparedness groups.

Level IV:

Level IV encompasses the Level III activation staffing pattern combined with non-local assets provided by mutual aid, State and Federal assistance, and volunteer resources.

6. Communications

Notifications - The St. Louis County Executive, an official of the Office of Emergency Management or the County Police Department's Bureau of Communications shall notify the County Government's Department Directors of an emergency, or the imminent threat thereof. If possible, notification shall be made by means of telephone. However, the initial notification might also be received by means of the County's Emergency Warning System (sirens) and/or via the Emergency Alert System (locally, via radio station KMOX-AM on 1120 Khz).

For more detailed information about communications systems, see Annex O (Communications) to this plan.

IX. ADMINISTRATION AND LOGISTICS**A. Administration**

Each St. Louis County Government Department shall maintain an inventory of all major resource items that might be required to save lives and property and to ensure the continuity of County Government operations during emergency conditions. Listings will reflect locations where each resource item (personnel, vehicle, equipment, etc.) customarily is employed, dispatched from, stored or maintained in order to determine proximity to emergency scenes. Departments

shall update these listings each year and shall provide one copy each to the Commander of the Office of Emergency Management and to the designated Disaster Coordinator of the Department.

Each St. Louis County Department, supporting volunteer service agency, organization, utility company, and fire service shall maintain comprehensive, accurate accounting records for all resources expended in the course of the conduct of emergency operations and recovery. These detailed records must fully account for such expenditures as:

1. Personnel hours (regular, overtime and any that might support special shift differential allowances).
2. Supplies expended.
3. Equipment use hours, whether Department owned, leased, purchased or borrowed.
4. Contracted services and/or special facilities.
5. Damages/injuries sustained by equipment, facilities and/or personnel, etc.

Such compilations of disaster-related expenses shall be submitted, upon request, to the County's Department of Administration where they will be collated into a report for the County Executive, and may be used as a basis for determining eligibility for emergency assistance funding from State and/or Federal authorities.

The following reports shall be submitted to the State Emergency Management Agency:

1. Situation Reports
The format for this report, which is a self-explanatory fill-in the blanks type, is contained in the State Emergency Management Agency's Disaster.
2. Assistance Guide for Local Governments.
3. Damage Assessment Reports
There are two types of damage assessment reports:
 - Individual Assistance
 - Public AssistanceThe formats and instructions for completion are contained in the aforementioned state guide and are to be submitted as soon as practical.
4. Executive Order Requesting State Assistance
Depending on the nature of conditions that prompted the request for state

assistance, the Executive Order must state:

- That the specific type(s) of resource(s) required (to include those possessed by local public, volunteer, commercial and mutual aid entities) are either:
 - i. Exhausted
 - ii. Unavailable
 - iii. Not available in time to save lives, prevent further damage, and/or to alleviate suffering.
- How long the resource (s) will be needed;
- Where to deliver or report;
- The name of the official to whom to report.

All individual relief assistance will be provided in accordance with the policies set forth in state and Federal laws and programs. Consumer complaints pertaining to alleged unfair or illegal business practices will be referred to the County Counselors Office.

There will be no discrimination on the grounds of race, color, religion, nationality, sex, sexual orientation, age, or economic status in the administration of emergency management functions. This policy applies equally to all levels of government, contractors, and labor unions.

No person, business concern, or other entity will receive assistance with respect to any loss for which he/she has received financial assistance under any other program or for which he/she has received insurance or other compensation.

When major disaster assistance activities may be carried out by contract or agreement with private organizations, firms, or individuals, preference will be given, to the extent feasible and practical, to those organizations, firms, and individuals residing or doing business primarily in the areas that have become distressed.

It will be the responsibility of the Office of Emergency Management to determine and to negotiate, obtain appropriate review, and keep current all mutual aid and inter-local agreements necessary to perform the letter and spirit of official tasks assigned by law and this plan.

All County departments and supporting organizations will maintain SOPs, or checklists to guide the actions of their personnel in performing all assigned emergency duties. For County departments, these may be a part of the department's annex to the Basic Emergency Operations Plan.

An emergency worker registered and performing emergency functions under the direction of an appropriate County agency would qualify for indemnity protections provided for in the County Emergency Management

Code (SLCRO Section I, Title VII, Sec. 703).

B. Logistics

All County departments and supporting organizations will maintain limited stocks of basic emergency supplies in all County owned and leased facilities. Control over the use and training of employees in the operation of these emergency supplies will be the responsibility of each Department. Departments are encouraged to add to these basic stocks so that, if necessary, it may be possible for building occupants to sustain themselves in these facilities for a minimum of 72 hours.

Once the Governor has proclaimed a "State of Emergency", the County Executive may "command the service and equipment of as many citizens as the County Executive considers necessary. Citizens so commandeered shall be entitled, during the period of such service, to all privileges, benefits and immunities as are provided by local, Federal and state civil defense regulations for registered civil defense or emergency services workers."

In a declared emergency the County Executive may, if time is vital to saving lives and reducing property damage or hardship, order Departments to dispense with normal purchasing practices that unduly postpone the receipt of required equipment, supplies, or services, except those that are mandated. Any such order shall at the earliest practical time be presented to the County Council for review and appropriate legislation including:

1. Findings by resolution with respect to actions taken;
2. Authorization of payment for services, supplies, equipment loans and commandeered property used during disaster response activities;
3. Approval of gifts, grants or loans accepted by the County Executive during the emergency;
4. Levy of taxes to meet costs of disaster response and recovery operations.

X. PLAN DEVELOPMENT AND MAINTENANCE

A. Development and Maintenance.

The development and maintenance of the St. Louis County Basic Emergency Operations Plan is a cooperative effort among all Departments and agencies of the County government and all local supporting organizations. Accordingly, the following specific responsibilities are assigned:

1. The staff of the Office of Emergency Management will administer the coordinating steps involved in the development, maintenance, promulgation, approval, and publication of the entire plan.

2. Department Annexes. Because these are relating to specialized functions that individual departments and/or support organizations deliver or provide for, it is clear that those with the day-to-day technical expertise and experience would know the function best. With this rationale in mind, assignments for developing, writing, and maintaining specific Department annexes, both in lead and associate capacities, are the responsibility of each Department of County government.

B. Review.

It is the responsibility of each Department to ensure that those portions of this plan that are assigned to them are reviewed and updated annually from the date of the last revision. Upon completion revisions will be submitted to the Office of Emergency Management for coordination, printing and distribution.

C. Distribution.

This BEOP is available to the general public via the Internet. The BEOP and associated annexes are available to St. Louis County government employees via the Intranet.

XI. EXERCISES

In order to provide practical, controlled operations experience to those who have emergency management responsibilities outlined herein, this plan shall be exercised at least once a year in the form of either:

1. A simulated emergency within St. Louis County.
2. The simulated impending threat of an emergency within St. Louis County.
3. An actual event occurring within St. Louis County and for which SEMA permits credit to be granted.

ATTACHMENTS:

1. State of Missouri Statutes, Chapter 44, Civil Defense
2. St. Louis County Revised Ordinance, Title VII, Chapter 703
3. Sample Mutual Aid II Contract
4. List of Mutual Aid II Municipalities
5. Sample Mutual Aid I Contract
6. List of Mutual Aid I Municipalities
7. St. Louis County Government Organization
8. St. Louis County Government Officials
9. St. Louis County Revised Ordinance, Title VII, Chapter 701, Section 701. 200
10. Identification of Emergency Responsibilities by Organizational Entity

ANNEXES:

- A. Direction and Control
- B. Department of Administration
- C. Department of Health
- D. Department of Highways and Traffic
- E. Department of Human Services
- F. Department of Justice Services
- G. Department of Parks and Recreation
- H. Department of Planning
- I. Department of Judicial Administration
- J. Department of Police
- K. Department of Public Works
- L. Department of Revenue
- M. Evacuation
- O. Communications
- P. Spirit of St. Louis Airport
- T. Terrorism

Attachment I (State of Missouri Statutes, Chapter 44, Civil Defense) To
ST. LOUIS COUNTY BASIC EMERGENCY OPERATIONS PLAN

Missouri Revised Statutes

Chapter 44
Civil Defense
Section 44.010

August 28, 2000

Definitions.

44.010. As used in sections 44.010 to 44.130, the following terms mean:

- (1) "Agency", the state emergency management agency;
- (2) "Director", the director of the state emergency management agency;
- (3) "Disasters", disasters which may result from terrorism, or from fire, wind, flood, earthquake, or other natural or man-made causes;
- (4) "Economic or geographic area", an area or areas within the state, or partly in this state and adjacent states, comprising political subdivisions grouped together for purposes of administration, organization, control or disaster recovery and rehabilitation in time of emergency;
- (5) "Emergency", any state of emergency declared by proclamation by the governor, or by resolution of the legislature pursuant to sections 44.010 to 44.130 upon the actual occurrence of a natural or man-made disaster of major proportions within this state when the safety and welfare of the inhabitants of this state are jeopardized;
- (6) "Emergency management", government at all levels performing emergency functions, other than functions for which military forces are primarily responsible;
- (7) "Emergency management functions", "emergency management activities" and "emergency management service", those functions required to prepare for and carry out actions to prevent, minimize and repair injury and damage due to disasters, to include emergency management of resources and administration of such economic controls as may be needed to provide for the welfare of the people, either on order of or at the request of the federal government, or in the event the federal government is incapable of administering such control;
- (8) "Emergency resources planning and management", planning for, management and coordination of national, state and local resources;
- (9) "Executive officer of any political subdivision", the county commission or county supervisor or the mayor or other manager of the executive affairs of any city, town, village or fire protection district;
- (10) "Local organization for emergency management", any organization established under this law by any county or by any city, town, or village to perform local emergency management functions;

Attachment I (State of Missouri Statutes, Chapter 44, Civil Defense) To
ST. LOUIS COUNTY BASIC EMERGENCY OPERATIONS PLAN

- (11) "Management", the activities of the emergency management director in the implementation of emergency operations plans during time of emergency;
- (12) "Planning", activities of the state and local emergency management agency in the formulation of emergency management plans to be used in time of emergency;
- (13) "Political subdivision", any county or city, town or village, or any fire district created by law.

State emergency management agency created.

44.020. There is hereby created within the military division of the executive department, office of the adjutant general, the "State Emergency Management Agency", for the general purpose of assisting in coordination of national, state and local activities related to emergency functions by coordinating response, recovery, planning and mitigation. This agency shall also serve as the statewide coordinator for activities associated with the National* Flood Insurance Program.

Powers and duties of governor.

44.022. 1. The governor shall have general direction and control of the state emergency management agency, and shall be responsible for the carrying out of the provisions of sections 44.010 to 44.130. In the event of disaster beyond local capabilities, the governor may assume direct operational control over all or any part of these emergency functions within this state through the director.

2. In performing duties pursuant to sections 44.010 to 44.130, the governor is authorized to cooperate with the federal government, other states, and private agencies in all matters pertaining to the emergency functions of this state and the nation.

3. In performing duties pursuant to sections 44.010 to 44.130 and to effect its policy and purpose, the governor is further authorized and empowered:

- (1) To make, amend, and rescind the necessary orders, rules, and regulations to carry out the provisions of sections 44.010 to 44.130 within the limits of the authority conferred upon the governor pursuant to the provisions of sections 44.010 to 44.130, with due consideration of the policies and plans of the federal government;
- (2) To require and direct the cooperation and assistance of agencies and officials of the state, economic and geographic areas, and local political subdivisions to assist in performance of emergency functions;
- (3) On behalf of this state, to enter into mutual aid arrangements with other states, and to coordinate mutual aid plans between political subdivisions, and economic and geographic areas of this state, and of this state and other states;
- (4) To delegate any administrative authority vested in the governor pursuant to sections 44.010 to 44.130, and to provide for the subdelegation of this authority;
- (5) Unless prohibited by law, any political subdivision may appropriate funds, or contribute services, personnel and facilities to special committees, subcommittees or task groups organized for the economic or geographic area within which it is situated;

Attachment I (State of Missouri Statutes, Chapter 44, Civil Defense) To
ST. LOUIS COUNTY BASIC EMERGENCY OPERATIONS PLAN

(6) To cooperate with the president, the Federal Emergency Management Agency, executive office of the president, other appropriate federal officers and agencies, and the officers and agencies of other states;

(7) To create, establish and appoint such volunteer disaster or state agency committees or both as may be needed to assemble and evaluate information which deals with emergency matters.

Earthquake and natural disaster volunteer program established, agency's duties--expenses--immunity from liability, exception.

44.023. 1. The Missouri state emergency management agency shall establish and administer an emergency volunteer program to be activated in the event of an earthquake or other natural disaster whereby volunteer architects and professional engineers registered under chapter 327, RSMo, and construction contractors, equipment dealers and other owners and operators of construction equipment may volunteer the use of their services and equipment, either manned or unmanned, for up to three days as requested and needed by the state emergency management agency.

2. In the event of an earthquake or other natural disaster, the enrolled volunteers shall, where needed, assist local jurisdictions and local building inspectors to provide essential demolition, cleanup or other related services and to determine whether buildings affected by an earthquake or other natural disaster:

- (1) Have not sustained serious damage and may be occupied;
- (2) Must be vacated temporarily pending repairs; or
- (3) Must be demolished in order to avoid hazards to occupants or other persons.

3. Any person when utilized as a volunteer under the emergency volunteer program shall have his incidental expenses paid by the local jurisdiction for which the volunteer service is provided.

4. Architects and professional engineers, construction contractors, equipment dealers and other owners and operators of construction equipment and the companies with which they are employed, working under the emergency volunteer program shall not be personally liable either jointly or separately for any act or acts committed in the performance of their official duties as emergency volunteers except in the case of willful misconduct or gross negligence.

5. Any individuals, employers, partnerships, corporations or proprietorships, that are working under the emergency volunteer program providing demolition, cleanup, removal or other related services, shall not be liable for any acts committed in the performance of their official duties as emergency volunteers except in the case of willful misconduct or gross negligence.

Adjutant general to head emergency management agency.

44.024. The adjutant general, subject to the direction and control of the governor, shall be the executive head of the office of the state emergency management agency.

State may accept federal goods and services on behalf of itself and its subdivisions.

Attachment I (State of Missouri Statutes, Chapter 44, Civil Defense) To
ST. LOUIS COUNTY BASIC EMERGENCY OPERATIONS PLAN

44.028. Whenever the federal government or officer or agency thereof shall offer to the state, or through the state to any political subdivision thereof, services, equipment, supplies, materials or funds by way of gift, grant or loan, for the purpose of emergency management, the state acting through the agency, or the political subdivision, through its executive officer with the consent of the governor, may accept the offer and may receive these services, equipment, supplies, materials or funds on behalf of the state or the political subdivision subject to the terms of the offer.

Emergency powers of governor, uses--Missouri disaster fund, funding, expenditures, procedures, purposes--aid to political subdivisions, when, procedure--expenditures in excess of \$1,000, governor to approve.

44.032. 1. The general assembly recognizes the necessity for anticipating and making advance provisions to care for the unusual and extraordinary burdens imposed on this state and its political subdivisions by disasters or emergencies. To meet such situations, it is the intention of the general assembly to confer emergency powers on the governor, acting through the director, and vesting the governor with adequate power and authority within the limitation of available funds in the Missouri disaster fund to meet any such emergency or disaster.

2. There is hereby established a fund to be known as the "Missouri Disaster Fund", to which the general assembly may appropriate funds and from which funds may be appropriated annually to the state emergency management agency. The funds appropriated shall be expended during a state emergency at the direction of the governor and upon the issuance of an emergency declaration which shall set forth the emergency and shall state that it requires the expenditure of public funds to furnish immediate aid and relief. The director of the state emergency management agency shall administer the fund.

3. Expenditures may be made upon direction of the governor for emergency management, as defined in section 44.010, or to implement the state disaster plans. Expenditures may also be made to meet the matching requirements of state and federal agencies for any applicable assistance programs.

4. Assistance may be provided from the Missouri disaster fund to political subdivisions of this state which have suffered from a disaster to such an extent as to impose a severe financial burden exceeding the ordinary reserve capacity of the subdivision affected. Applications for aid under this section shall be made to the state emergency management agency on such forms as may be prescribed and furnished by the agency, which forms shall require the furnishing of sufficient information to determine eligibility for aid and the extent of the financial burden incurred. The agency may call upon other agencies of the state in evaluating such applications. The director of the state emergency management agency shall review each application for aid under the provisions of this section and recommend its approval or disapproval, in whole or in part, to the governor. If approved, the governor shall determine and certify to the director of the state emergency management agency the amount of aid to be furnished. The director of the state emergency management agency shall thereupon issue his voucher to the commissioner of administration, who shall issue his warrants therefor to the applicant.

5. When a disaster or emergency has been proclaimed by the governor or there is a national emergency, the director of the state emergency management agency, upon order of the governor, shall have authority to expend funds for the following:

Attachment I (State of Missouri Statutes, Chapter 44, Civil Defense) To
ST. LOUIS COUNTY BASIC EMERGENCY OPERATIONS PLAN

- (1) The purposes of sections 44.010 to 44.130 and the responsibilities of the governor and the state emergency management agency as outlined in sections 44.010 to 44.130;
- (2) Employing, for the duration of the response and recovery to emergency, additional personnel and contracting or otherwise procuring necessary appliances, supplies, equipment, and transport;
- (3) Performing services for and furnishing materials and supplies to state government agencies, counties, and municipalities with respect to performance of any duties enjoined by law upon such agencies, counties, and municipalities which they are unable to perform because of extreme natural or man-made phenomena, and receiving reimbursement in whole or in part from such agencies, counties, and municipalities able to pay therefor under such terms and conditions as may be agreed upon by the director of the state emergency management agency and any such agency, county, or municipality;
- (4) Performing services for and furnishing materials to any individual in connection with alleviating hardship and distress growing out of extreme natural or man-made phenomena, and receiving reimbursement in whole or in part from such individual under such terms as may be agreed upon by the director of the state emergency management agency and such individual;
- (5) Providing services to counties and municipalities with respect to quelling riots and civil disturbances;
- (6) Repairing and restoring public infrastructure;
- (7) Furnishing transportation for supplies to alleviate suffering and distress;
- (8) Furnishing medical services and supplies to prevent the spread of disease and epidemics;
- (9) Quelling riots and civil disturbances;
- (10) Training individuals or governmental agencies for the purpose of perfecting the performance of emergency assistance duties as defined in the state disaster plans;
- (11) Procurement, storage, and transport of special emergency supplies or equipment determined by the director to be necessary to provide rapid response by state government to assist counties and municipalities in impending or actual emergencies;
- (12) Clearing or removing from publicly or privately owned land or water, debris and wreckage which may threaten public health or safety; and
- (13) Such other measures as are customarily necessary to furnish adequate relief in cases of catastrophe or disaster.

6. The governor may receive such voluntary contributions as may be made from any source to aid in carrying out the purposes of this section and shall credit the same to the Missouri disaster fund.

7. All obligations and expenses incurred by the governor in the exercise of the powers and duties vested by the provisions of this section shall be paid by the state treasurer out of available funds in the Missouri disaster fund, and the commissioner of administration shall draw warrants upon the state treasurer for the payment of

Attachment I (State of Missouri Statutes, Chapter 44, Civil Defense) To
ST. LOUIS COUNTY BASIC EMERGENCY OPERATIONS PLAN

such sum, or so much thereof as may be required, upon receipt of proper vouchers provided by the director of the state emergency management agency.

8. The provisions of this section shall be liberally construed in order to accomplish the purposes of sections 44.010 to 44.130 and to permit the governor to cope adequately with any emergency which may arise, and the powers vested in the governor by this section shall be construed as being in addition to all other powers presently vested in the governor and not in derogation of any existing powers.

9. Such funds as may be made available by the government of the United States for the purpose of alleviating distress from disasters may be accepted by the state treasurer and shall be credited to the Missouri disaster fund, unless otherwise specifically provided in the act of Congress making such funds available.

10. The foregoing provisions of this section notwithstanding, any expenditure or proposed series of expenditures which total in excess of one thousand dollars per project shall be approved by the governor prior to the expenditure.

All political subdivisions shall establish a local emergency management organization.

44.080. 1. Each political subdivision of this state shall establish a local organization for disaster planning in accordance with the state emergency operations plan and program. The executive officer of the political subdivision shall appoint a coordinator who shall have direct responsibility for the organization, administration and operation of the local emergency management operations, subject to the direction and control of the executive officer or governing body. Each local organization for emergency management shall be responsible for the performance of emergency management functions within the territorial limits of its political subdivision, and may conduct these functions outside of the territorial limits as may be required pursuant to the provisions of this law.

2. In carrying out the provisions of this law, each political subdivision may:

(1) Appropriate and expend funds, make contracts, obtain and distribute equipment, materials, and supplies for emergency management purposes; provide for the health and safety of persons; the safety of property; and direct and coordinate the development of disaster plans and programs in accordance with the policies and plans of the federal and state governments; and

(2) Appoint, provide, or remove rescue teams, auxiliary fire and police personnel and other emergency operations teams, units or personnel who may serve without compensation.

Mutual-aid agreements.

44.090. 1. The executive officer of any political subdivision, with the approval of the governor, may enter into mutual-aid arrangements or agreements with other public and private agencies within and without the state for reciprocal emergency aid. Such arrangements or agreements shall be consistent with the state disaster plan and program and the provisions of section 70.837, RSMo, and section 320.090, RSMo. In time of emergency it shall be the duty of each local organization for emergency management to render assistance in accordance with the provisions of such mutual-aid arrangements or agreements.

Attachment I (State of Missouri Statutes, Chapter 44, Civil Defense) To
ST. LOUIS COUNTY BASIC EMERGENCY OPERATIONS PLAN

2. The coordinator of each local organization for emergency management may assist in negotiation of reciprocal mutual-aid agreements between his organization and other public and private agencies and between the governor and the adjoining states or political subdivisions thereof, and shall carry out arrangements or agreements relating to the local unit.

Emergency powers of governor.

44.100. 1. The emergency powers of the governor shall be as follows:

(1) The provisions of this section shall be operative only during the existence of a state of emergency (referred to in this section as "emergency"). The existence of an emergency may be proclaimed by the governor or by resolution of the legislature, if the governor in his proclamation, or the legislature in its resolution, finds that a natural or man-made disaster of major proportions has actually occurred within this state, and that the safety and welfare of the inhabitants of this state require an invocation of the provisions of this section.

(2) Any emergency, whether proclaimed by the governor or by the legislature, shall terminate upon the proclamation thereof by the governor, or the passage by the legislature, of a resolution terminating such emergency.

(3) During the period that the state of emergency exists or continues, the governor shall:

(a) Enforce and put into operation all plans, rules and regulations relating to disasters and emergency management of resources adopted under this law and to assume direct operational control of all emergency forces and volunteers in the state;

(b) Take action and give directions to state and local law enforcement officers and agencies as may be reasonable and necessary for the purpose of securing compliance with the provisions of this law and with the orders, rules and regulations made pursuant thereof;

(c) Seize, take or requisition to the extent necessary to bring about the most effective protection of the public:

a. Any means of transportation, other than railroads and railroad equipment and fuel, and all fuel necessary for the propulsion thereof;

b. Any communication system or part thereof necessary to the prompt and efficient functioning of the emergency management of the state;

c. All stocks of fuel;

d. Facilities for housing, feeding and hospitalization of persons, including buildings and plants;

(d) Control, restrict and regulate by rationing, freezing, use of quotas, prohibitions on shipments, price fixing, allocation or other means the use, sale or distribution of food, feed, fuel, clothing and other commodities, materials, goods or services;

(e) Prescribe and direct activities in connection with but not limited to use, conservation, salvage and prevention of waste of materials, services and facilities, including production, transportation, power and communication facilities, training and supply of labor, utilization of industrial plants, health and medical care, nutrition, housing,

Attachment I (State of Missouri Statutes, Chapter 44, Civil Defense) To
ST. LOUIS COUNTY BASIC EMERGENCY OPERATIONS PLAN

including the use of existing and private facilities, rehabilitation, education, welfare, child care, recreation, consumer protection and other essential civil needs;

(f) To use or distribute all or any of this property among the inhabitants of the state in any area adversely affected by a natural or man-made disaster and to account to the state treasurer for any funds received thereof;

(g) To waive or suspend the operation of any statutory requirement or administrative rule regarding the licensing, certification or issuance of permits evidencing professional, mechanical or other skills;

(h) In accordance with rules or regulations, to provide that all law enforcement authorities and other emergency response workers and agencies of other states who may be within this state at the request of the governor or pursuant to state or local mutual-aid agreements or compacts shall have the same authority and possess the same powers, duties, rights, privileges and immunities as are possessed by like law enforcement authorities and emergency response workers and agencies of this state;

(i) To perform and exercise such other functions, powers and duties as may be necessary to promote and secure the safety and protection of the civilian population.

2. When any property is seized, taken or requisitioned under this section, the circuit court of the county in which the property was taken may on the application of the owner thereof or on the application of the governor in cases where numerous claims may be filed, appoint three disinterested commissioners in the manner provided by section 523.040, RSMo, to assess the damages which the owners may have sustained by reason of the appropriation thereof. Upon the application the amount due because of the seizure of property shall be determined in the manner provided in chapter 523, RSMo, for the determination of damages in case of the exercise of the power of eminent domain.

Cooperation of existing state agencies and political subdivisions in emergency--suspension of activities and functions of state agencies and political subdivisions may be ordered.

44.110. 1. In carrying out the emergency powers pursuant to the provisions of sections 44.010 to 44.130, the governor and the executive officers or governing bodies of the political subdivisions of the state are directed to utilize the services, equipment, supplies and facilities of existing departments, offices, and agencies of the state and political subdivisions thereof to the maximum extent practicable, and the officers and personnel of all departments, offices, and agencies are directed to cooperate with and extend these services and facilities to the governor and to the disaster organizations of the state upon request.

2. In any emergency, be it due to natural or man-made disaster, the governor may order the suspension, in whole or in part, of the activities, functions and duties of any administrative agency, officer or employee of the state or of any political subdivision thereof and may direct the personnel of any agency and any officer and employee of the state or any political subdivision thereof to render services and to provide facilities as may be needed for the carrying out of emergency management functions within or without this state. In the event of any such order, any law requiring specific performance of civil duties by any officer or employee shall be suspended as long as the officer or employee is engaged in emergency management functions.

Attachment I (State of Missouri Statutes, Chapter 44, Civil Defense) To
ST. LOUIS COUNTY BASIC EMERGENCY OPERATIONS PLAN

Regulations to be filed with secretary of state--violations--penalty.

Rules of governor to govern all organizations established under sections 44.010 to 44.130--each organization to have copy of all rules and regulations.

44.112. It shall be the duty of every organization established pursuant to sections 44.010 to 44.130 and of the officers thereof to execute and enforce such orders, rules and regulations as may be made by the governor pursuant to the authority of sections 44.010 to 44.130. Each organization shall have available for inspection at its office all orders, rules and regulations made by the governor, or pursuant to such authority.

44.113. No organization for emergency management established pursuant to sections 44.010 to 44.130 shall participate in any form of political activity, nor shall it be used directly or indirectly for political purposes.

Persons employed by or associated with civil defense agencies --qualifications--oath required.

44.115. No person shall be employed or associated in any capacity in any organization established under sections 44.010 to 44.130 who advocates or has advocated a change by force or violence in the constitutional form of the government of the United States or in this state or the overthrow of any government in the United States by force or violence, or has been convicted of or is under indictment or information charging any subversive act against the United States. Each person who is appointed to serve in an organization for civil defense shall, before entering upon his duties, take an oath, in writing, before a person authorized to administer oaths in this state, which oath shall be substantially as follows:

"I,, do solemnly swear (or affirm) that I will support and defend the Constitution of the United States and the Constitution of the state of Missouri, against all enemies, foreign and domestic; that I will bear true faith and allegiance to the same; that I take this obligation freely, without any mental reservation or purpose of evasion; and that I will well and faithfully discharge the duties upon which I am about to enter. And I do further swear (or affirm) that I do not advocate, nor am I a member of any political party or organization that advocates the overthrow of the government of the United States or of this state by force or violence; and that during such a time as I am a member of the (name of disaster or emergency organization), I will not advocate nor become a member of any political party or organization that advocates the overthrow of the government of the United States or of this state by force or violence."

Expenses, how paid.

44.120. All expenses, salaries and other payments authorized by this law, and chargeable to the state, including any payments required by any compacts or agreements made hereunder, shall be paid out of the general revenues from the state treasury.

Agency to work with volunteers.

44.125. 1. The agency may develop effective citizen involvement to recruit, train and accept the services of volunteers to supplement the programs administered by the agency.

Attachment I (State of Missouri Statutes, Chapter 44, Civil Defense) To
ST. LOUIS COUNTY BASIC EMERGENCY OPERATIONS PLAN

2. Volunteers recruited, trained or accepted by the agency shall comply with applicable agency policy regulations.

3. The agency shall:

(1) Provide staff as deemed necessary for the effective management and development of volunteer programs;

(2) Take such actions as are necessary and appropriate to develop meaningful opportunities for citizen involvement in agency-administered programs;

(3) Develop and provide to all volunteers written rules governing the job descriptions, recruitment, screening, training responsibility, utilization and supervision of volunteers;

(4) Educate volunteers to ensure that they understand their duties and responsibilities;

(5) Provide a receptive environment for citizen involvement; and

(6) Provide for the recognition of volunteers who have offered exceptional service to the agency.

4. Volunteers shall be deemed unpaid employees and shall be accorded the protection of the legal expense fund and other provisions of section 105.711, RSMo.

5. Reimbursement for transportation and other necessary expenses may be furnished to those volunteers whose presence on special assignment is determined to be necessary by the agency. Such expenses shall be reimbursed from the regular appropriations of the agency. Volunteers may use state vehicles in the performance of agency-related duties, subject to those rules and regulations governing use of state vehicles by paid staff.

6. As used in this section, "volunteer" means any person who, of his or her own free will, performs any assigned duties for the agency with no monetary or material compensation.

7. Any person serving as a volunteer may be terminated from service in that capacity by the director.

Regulations to be filed with secretary of state--violations--penalty.

44.130. 1. Every plan, rule and regulation adopted by the governor under the provisions of this law and every amendment thereof shall be filed in the office of the secretary of state.

2. Any person violating any rule or regulation adopted under this law after it has become effective during an emergency or any person or officer violating any provision of this law shall be deemed guilty of a misdemeanor.

Citation of law--short title.

44.225. Sections 44.225 to 44.237 shall be known as the "Seismic Safety Commission Act".

Commission on seismic safety created--members, qualifications --officers--quorum--terms--removal from office--vacancies--expenses --staff.

Attachment I (State of Missouri Statutes, Chapter 44, Civil Defense) To
ST. LOUIS COUNTY BASIC EMERGENCY OPERATIONS PLAN

44.227. 1. There is hereby created a "Seismic Safety Commission", which shall be domiciled in the department of public safety.

2. The commission shall consist of seventeen members, one who shall be a member of the senate appointed by the president pro tem of the senate, one who shall be a member of the house of representatives appointed by the speaker of the house of representatives, and fifteen members appointed by the governor, with the advice and consent of the senate, one each representing the following professional areas: architecture, planning, fire protection, public utilities, electrical engineering, mechanical engineering, structural engineering, soils engineering, geology, seismology, local government, insurance, business, the American Red Cross and emergency management.

3. Commission members shall elect annually from its membership a chairman and vice chairman. A quorum shall consist of nine members. All commission members shall be residents of the state of Missouri and shall have reasonable knowledge of issues relating to earthquakes.

4. The term of office for each member of the commission appointed by the governor shall be four years, except that of the initial appointments, seven members shall be appointed for a term of two years and eight members shall be appointed for a term of four years. Any member may be removed from office by the governor without cause. Before the expiration of the term of a member appointed by the governor, the governor shall appoint a successor whose term begins on July first next following. A member is eligible for reappointment. If there is a vacancy for any cause, the governor shall make an appointment to become effective immediately for the unexpired term.

5. Each member of the commission shall serve without compensation but shall receive fifty dollars for each day devoted to the affairs of the commission, plus actual and necessary expenses incurred in the discharge of his official duties.

6. The office of emergency management in the department of public safety shall provide to the commission all technical, clerical and other necessary support services.

Commission's powers.

44.229. The commission shall have the authority to:

(1) Accept grants, contributions and appropriations from public agencies, private foundations or individuals;

(2) Appoint committees from its membership, appoint advisory committees from interested public and private groups, and appoint ex officio members who shall not be entitled to vote, to advise the commission;

(3) Contract for or employ, subject to appropriations made for that purpose, any professional and research services required by the commission or required for the performance of necessary work and services which, in the commission's opinion, cannot satisfactorily be performed by its officers and employees or by other federal, state or local governmental agencies;

(4) Enter into agreements to act cooperatively with private nonprofit scientific, educational or professional associations or foundations engaged in promoting seismic

Attachment I (State of Missouri Statutes, Chapter 44, Civil Defense) To
ST. LOUIS COUNTY BASIC EMERGENCY OPERATIONS PLAN

safety in Missouri; and

(5) Do any and all other things necessary to carry out the purposes of sections 44.225 to 44.237.

Program to prepare state for responding to a major earthquake, commission's duty to establish.

44.231. The commission shall initiate, with the assistance and participation of other state, federal and local government agencies, a comprehensive program to prepare the state for responding to a major earthquake. The program shall be implemented in order to result in specific tools or products to be used by governments in responding to an earthquake, such as educational materials for citizens. This program may be implemented on a prototypical basis in one area of the state affected by earthquake predictions, provided that it is useful for application in other areas of the state upon its completion.

Duties of commission.

44.233. The commission is responsible for all of the following in connection with earthquake hazard mitigation:

- (1) Setting goals and priorities in the public and private sectors;
- (2) Requesting appropriate state agencies to devise criteria to promote earthquake and disaster safety;
- (3) Scheduling a report on disaster mitigation issues from the state emergency management agency, on the commission agenda as required. For the purposes of this subdivision, the term "disaster" refers to all natural hazards which could have impact on public safety;
- (4) Recommending program changes to state agencies, local agencies and the private sector where such changes would improve earthquake hazards and reduction;
- (5) Reviewing the recovery and reconstruction efforts after damaging earthquakes;
- (6) Gathering, analyzing and disseminating information;
- (7) Encouraging research;
- (8) Sponsoring training to help improve the competence of specialized enforcement and other technical personnel;
- (9) Helping to coordinate the earthquake safety activities of government at all levels;
- (10) Establishing and maintaining necessary working relationships with any boards, commissions, departments and agencies or other public or private organizations.

Review and advisory powers of commission.

44.235. To implement its responsibilities, the commission may:

- (1) Review state budgets and review grant proposals, other than those grant proposals submitted by institutions of postsecondary education to the federal government, for earthquake related activities and to advise the governor and the general assembly thereon;

Attachment I (State of Missouri Statutes, Chapter 44, Civil Defense) To
ST. LOUIS COUNTY BASIC EMERGENCY OPERATIONS PLAN

(2) Review legislation programs relating to earthquake safety, to advise the governor and general assembly concerning the proposals and to propose needed legislation;

(3) Recommend the addition, deletion or changing of state agency standards when, in the commission's view, the existing situation creates undue hazards or when new developments would promote earthquake hazard mitigation, and conduct public hearings as deemed necessary on the subjects;

(4) In addition, the commission may perform any of the functions contained in subdivisions (1) to (3) of this section, inclusive, in relation to other natural disasters.

Study for earthquake hazard reduction, duties of commission.

44.237. 1. In addition to its responsibilities listed in sections 44.225 to 44.237, the commission shall undertake a study to determine the feasibility of establishing a comprehensive program of earthquake hazard reduction having as its purposes the saving of lives and mitigating damage to property in Missouri.

2. The study shall accomplish the following tasks:

(1) Earthquake hazard reduction. The study shall develop a comprehensive program for the reduction of earthquake hazards in Missouri. It shall include, but not necessarily be limited to, the following:

(a) A review of and recommendations for improving the development and implementation of technically and economically feasible codes, standards and procedures for the design and construction of new structures and the strengthening of existing structures so as to increase the earthquake resistance of structures located in areas of significant seismic hazard;

(b) A review of current methods and recommendations for new methods to improve the development, publication and promotion, in conjunction with local officials, research organizations and professional organizations, of model codes and other means to provide better information about seismic hazards to guide land-use policy decisions and building activity;

(c) A review of and recommendations for methods, practices and procedures to educate the public, including local officials, about the nature and consequences of earthquakes, about procedures for identifying those locations and structures especially susceptible to earthquake damage and about ways to reduce and mitigate the adverse effects of an earthquake;

(d) A review of and recommendations for programs and techniques to improve preparedness for and response to damaging earthquakes with special attention being given to hazard control measures, pre-earthquake emergency planning, readiness of emergency services and planning for post-earthquake reconstruction and redevelopment.

(2) Implementation processes. With respect to implementation of earthquake hazard reduction, the study shall include the following:

(a) Recommendations for new roles, responsibilities and programs for state and local agencies, universities, private organizations and volunteer organizations,

Attachment I (State of Missouri Statutes, Chapter 44, Civil Defense) To
ST. LOUIS COUNTY BASIC EMERGENCY OPERATIONS PLAN

including goals, priorities and expenditures of future state funds specifically identified for the recommended hazards reduction program;

(b) Recommendations for methods and procedures to disseminate and implement basic and applied earthquake research in order to achieve higher levels of seismic safety.

(3) Coordination with other agencies. To the extent it is practical to do so, the study required by this section shall be coordinated with the relevant local, regional and federal government agencies, key elements of the private sector, and at least the following state agencies: state emergency management agency, division of geology and land survey, division of design and construction, Missouri housing development commission, department of natural resources, department of labor and industrial relations, public service commission, department of health, office of the state fire marshal, department of transportation, department of revenue, office of the adjutant general, department of insurance, and the department of elementary and secondary education.

3. The study shall include recommendations for statutory changes and specific executive actions to be taken by state and local agencies necessary to establish and implement an earthquake hazards reduction program for the state of Missouri.

4. The commission shall submit the study to the general assembly by June 30, 1997, or earlier at its discretion.

Emergency mutual aid compact.

44.415. 1. This shall be known and may be cited as the "Emergency Mutual Aid Compact".

2. The emergency mutual aid compact is hereby enacted into law and entered into with all other states which adopt the compact in a form substantially as follows:

EMERGENCY MUTUAL AID COMPACT

ARTICLE I - PURPOSE AND AUTHORITIES

This compact is made and entered into by and between the participating member states which enact this compact, hereinafter called party states. For the purposes of this agreement, the term "state" is taken to mean the several states, the Commonwealth of Puerto Rico, the District of Columbia, and all U.S. territorial possessions.

The purpose of this compact is to provide for mutual assistance between the states entering into this compact in managing any emergency or disaster that is duly declared by the governor of the affected state(s), whether arising from natural disaster, technological hazard, man-made disaster, civil emergency aspects of resources shortages, community disorders, insurgency, or enemy attack.

This compact shall also provide for mutual cooperation in emergency-related exercises, testing, or other training activities using equipment and personnel simulating performance of any aspect of the giving and receiving of aid by party states or subdivisions of party states during emergencies, such actions occurring outside actual declared emergency periods. Mutual assistance in this compact may include the use of the states' National Guard forces, either in accordance with the National Guard Mutual Assistance Compact or by mutual agreement between states.

Attachment I (State of Missouri Statutes, Chapter 44, Civil Defense) To
ST. LOUIS COUNTY BASIC EMERGENCY OPERATIONS PLAN

ARTICLE II - GENERAL IMPLEMENTATION

Each party state entering into this compact recognizes many emergencies transcend political jurisdictional boundaries and that intergovernmental coordination is essential in managing these and other emergencies under this compact. Each state further recognizes that there will be emergencies which require immediate access and present procedures to apply outside resources to make a prompt and effective response to such an emergency. This is because few, if any, individual states have all the resources they may need in all types of emergencies or the capability of delivering resources to areas where emergencies exist.

The prompt, full, and effective utilization of resources of the participating states, including any resources on hand or available from the Federal Government or any other source, that are essential to the safety, care, and welfare of the people in the event of any emergency or disaster declared by a party state, shall be the underlying principle on which all articles of this compact shall be understood.

On behalf of the governor of each state participating in the compact, the legally designated state official who is assigned responsibility for emergency management will be responsible for formulation of the appropriate interstate mutual aid plans and procedures necessary to implement this compact. Such plans and any revision thereto shall not become effective unless submitted to and approved by the general assembly by concurrent resolution; except that if the general assembly is not in session, such plans or revisions thereto shall take effect but shall terminate if the general assembly does not approve of the plan or revision within thirty calendar days after the general assembly has convened in regular or special session.

ARTICLE III - PARTY STATE RESPONSIBILITIES

A. It shall be the responsibility of each party state to formulate procedural plans and programs for interstate cooperation in the performance of the responsibilities listed in this article. In formulating such plans, and in carrying them out, the party states, insofar as practical, shall:

- i. Review individual state hazards analyses and, to the extent reasonably possible, determine all those potential emergencies the party states might jointly suffer, whether due to natural disaster, technological hazard, man-made disaster, emergency aspects of resource shortages, civil disorders, insurgency, or enemy attack.
- ii. Review party states' individual emergency plans and develop a plan which will determine the mechanism for the interstate management and provision of assistance concerning any potential emergency.
- iii. Develop interstate procedures to fill any identified gaps and to resolve any identified inconsistencies or overlaps in existing or developed plans.
- iv. Assist in warning communities adjacent to or crossing the state boundaries.
- v. Protect and assure uninterrupted delivery of services, medicines, water, food, energy and fuel, search and rescue, and critical lifeline equipment, services, and resources, both human and material.
- vi. Inventory and set procedures for the interstate loan and delivery of human and material resources, together with procedures for reimbursement or forgiveness.

Attachment I (State of Missouri Statutes, Chapter 44, Civil Defense) To
ST. LOUIS COUNTY BASIC EMERGENCY OPERATIONS PLAN

vii. Provide, to the extent authorized by law, for temporary suspension of any statutes or ordinances that restrict the implementation of the responsibilities of this compact*.

B. The authorized representative of a party state may request assistance of another party state by contacting the authorized representative of that state. The provisions of this agreement shall only apply to requests for assistance made by and to authorized representatives. Requests may be verbal or in writing. If verbal, the request shall be confirmed in writing within 30 days of the verbal request. Requests shall provide the following information:

i. A description of the emergency service function for which assistance is needed, such as but not limited to fire services, law enforcement, emergency medical, transportation, communications, public works and engineering, building inspection, planning and information assistance, mass care, resource support, health and medical services, and search and rescue.

ii. The amount and type of personnel, equipment, materials and supplies needed, and a reasonable estimate of the length of time they will be needed.

iii. The specific place and time for staging of the assisting party's response and a point of contact at that location.

C. There shall be frequent consultation between state officials who have assigned emergency management responsibilities and other appropriate representatives of the party states with affected jurisdictions and United States Government, with free exchange of information, plans, and resource records relating to emergency capabilities.

ARTICLE IV - LIMITATIONS

Any party state requested to render mutual aid or conduct exercises and training for mutual aid shall take such action as is necessary to provide and make available the resources covered by this compact in accordance with the terms hereof; provided that it is understood that the state rendering aid may withhold resources to the extent necessary to provide reasonable protection for such state.

Each party state shall afford to the emergency forces of any party state, while operating within its state limits under the terms and conditions of this compact, the same powers (except that of arrest unless specifically authorized by the receiving state), duties, rights, and privileges as are afforded forces of the state in which they are performing emergency services. Emergency forces will continue under the command and control of their regular leaders, but the organizational units will come under the operational control of the emergency services authorities of the state receiving assistance. These conditions may be activated, as needed, only subsequent to a declaration of a state of emergency or disaster by the governor of the party state that is to receive assistance or commencement of exercises or training for mutual aid and shall continue so long as the exercises or training for mutual aid are in progress, the state of emergency or disaster remains in effect or loaned resources remain in the receiving state(s), whichever is longer.

ARTICLE V - LICENSES AND PERMITS

Attachment I (State of Missouri Statutes, Chapter 44, Civil Defense) To
ST. LOUIS COUNTY BASIC EMERGENCY OPERATIONS PLAN

Whenever any person holds a license, certificate, or other permit issued by any state party to the compact evidencing the meeting of qualifications for professional, mechanical, or other skills, and when such assistance is requested by the receiving party state, such person shall be deemed licensed, certified, or permitted by the state requesting assistance to render aid involving such skill to meet a declared emergency or disaster, subject to such limitations and conditions as the governor of the requesting state may prescribe by executive order or otherwise.

ARTICLE VI - LIABILITY

Officers or employees of a party state rendering aid in another state pursuant to this compact shall be considered agents of the requesting state for tort liability and immunity purposes; and no party state or its officers or employees rendering aid in another state pursuant to this compact shall be liable on account of any act or omission in good faith on the part of such forces while so engaged or on account of the maintenance or use of any equipment or supplies in connection therewith. Good faith in this article shall not include willful misconduct, gross negligence, or recklessness.

ARTICLE VII - SUPPLEMENTARY AGREEMENTS

Inasmuch as it is probable that the pattern and detail of the machinery for mutual aid among two or more states may differ from that among the states that are party hereto, this instrument contains elements of a broad base common to all states, and nothing herein contained shall preclude any state from entering into supplementary agreements with another state or affect any other agreements already in force between states. Supplementary agreements may comprehend, but shall not be limited to, provisions for evacuation and reception of injured and other persons and the exchange of medical, fire, police, public utility, reconnaissance, welfare, transportation and communications personnel, equipment and supplies.

ARTICLE VIII - COMPENSATION

Each party state shall provide for the payment of compensation and death benefits to injured members of the emergency forces of that state and representatives of deceased members of such forces in case such members sustain injuries or are killed while rendering aid pursuant to this compact, in the same manner and on the same terms as if the injury or death were sustained within their own state.

ARTICLE IX - REIMBURSEMENT

Any party state rendering aid in another state pursuant to this compact shall be reimbursed by the party state receiving such aid for any loss or damage to or expense incurred in the operation of any equipment and the provision of any service in answering a request for aid and for the costs incurred in connection with such requests; provided, that any aiding party state may assume in whole or in part such loss, damage, expense, or other cost, or may loan such equipment or donate such services to the receiving party state without charge or cost; and provided further, that any two or more party states may enter into supplementary agreements establishing a different allocation of costs among those states. Article VIII expenses shall not be reimbursable under this provision.

Attachment I (State of Missouri Statutes, Chapter 44, Civil Defense) To
ST. LOUIS COUNTY BASIC EMERGENCY OPERATIONS PLAN

ARTICLE X - EVACUATION

Plans for the orderly evacuation and interstate reception of portions of the civilian population as the result of any emergency or disaster of sufficient proportions to so warrant, shall be worked out and maintained between the party states and the emergency management/services directors of the various jurisdictions where any type of incident requiring evacuations might occur. Such plans shall be put into effect by request of the state from which evacuees come and shall include the manner of transporting such evacuees, the number of evacuees to be received in different areas, the manner in which food, clothing, housing, and medical care will be provided, the registration of the evacuees, the providing of facilities for the notification of relatives or friends, and the forwarding of such evacuees to other areas or the bringing in of additional materials, supplies, and all other relevant factors. Such plans shall provide that the party state receiving evacuees and the party state from which the evacuees come shall mutually agree as to reimbursement of out-of-pocket expenses incurred in receiving and caring for such evacuees, for expenditures for transportation, food, clothing, medicines and medical care, and like items. Such expenditures shall be reimbursed as agreed by the party state from which the evacuees come. After the termination of the emergency or disaster, the party state from which the evacuees come shall assume the responsibility for the ultimate support of repatriation of such evacuees.

ARTICLE XI - IMPLEMENTATION

- A. This compact shall become operative immediately upon its enactment into law by any two (2) states; thereafter, this compact shall become effective as to any other state upon its enactment by such state.
- B. Any party state may withdraw from this compact by enacting a statute repealing the same, but no such withdrawal shall take effect until 30 days after the governor of the withdrawing state has given notice in writing of such withdrawal to the governors of all other party states. Such action shall not relieve the withdrawing state from obligations assumed hereunder prior to the effective date of withdrawal.
- C. Duly authenticated copies of this compact and of such supplementary agreements as may be entered into shall, at the time of their approval, be deposited with each of the party states and with the Federal Emergency Management Agency and other appropriate agencies of the United States Government.

ARTICLE XII - VALIDITY

This section shall be construed to effectuate the purposes stated in Article I hereof. If any provision of this compact* is declared unconstitutional, or the applicability thereof to any person or circumstances is held invalid, the constitutionality of the remainder of this section and the applicability thereof to other persons and circumstances shall not be affected thereby.

ARTICLE XIII - ADDITIONAL PROVISIONS

Nothing in this compact shall authorize or permit the use of military force by the National Guard of a state at any place outside that state in any emergency for which the President is authorized by law to call into federal service the militia, or for any purpose for which the use of the Army or the Air Force would in the absence of express statutory authorization be prohibited under Section 1385 of title 18, United States Code.

Attachment II (St. Louis County Emergency Management Code) To
ST. LOUIS COUNTY BASIC EMERGENCY OPERATIONS PLAN

BILL NO. 389 , 1990

ORDINANCE NO. 15,175 , 1990

Introduced by Councilwoman Conant

AN ORDINANCE

AMENDING TITLE VII, CHAPTER 703 SLCRO 1974 AS AMENDED, ENTITLED "ST. LOUIS COUNTY CIVIL PREPAREDNESS CODE," BY REPEALING SAID CHAPTER AND ENACTING A NEW CHAPTER 703 TO BE KNOWN AS "ST. LOUIS COUNTY EMERGENCY MANAGEMENT CODE."

BE IT ORDAINED BY THE COUNTY COUNCIL OF ST. LOUIS COUNTY, MISSOURI,
As FOLLOWS:

SECTION 1. Title VII, Chapter 703 SLCRO 1974 as amended, entitled "St. Louis County Civil Preparedness Code," is amended by repealing said chapter and enacting a new Chapter 703 in lieu thereof which shall be known as "St. Louis County Emergency Management Code" and shall read as follows:

"703.010 Short Title. -- This chapter may be referred to as the "St. Louis County Emergency Management Code."

703.020 Emergency Management - Defined. -- "Emergency Management" means the preparation for and the carrying out of all emergency functions other than functions for which military forces are primarily responsible or those carried out by the American Red Cross and the Salvation Army and other organizations dealing with natural disasters, to minimize and repair injury and damage resulting from disaster caused by enemy attack, sabotage or other hostile action or from fire, flood, earthquake or other natural causes. These functions include, without limitation, fire-fighting services, police services, medical, hospital and health services, rescue, engineering, air raid warning services, communications, radiological, chemical and other special weapons of defense, evacuation of persons from stricken areas, emergency transportation, temporary restoration of public utility services and other functions relating to civilian protection, together with all other activities necessary or incidental to the preparation for and carrying out of the foregoing functions.

703.030 Office of Emergency Management Organization. -There is hereby established, under the authority of the Department of Police, the Office of Emergency Management for St. Louis County, to carry out the functions of emergency management, as defined in this chapter.

703.040 Director of Emergency Management Establishment -- Salary -- Duties. --

1. There is hereby established, under the Department of Police, the position of Director of Emergency Management who shall be appointed by the Superintendent of Police.
2. The salary and terms and conditions of employment of the Director shall be in accordance with applicable ordinance provisions and the rules and regulations of the Department of Police.

Attachment II (St. Louis County Emergency Management Code) To
ST. LOUIS COUNTY BASIC EMERGENCY OPERATIONS PLAN

3. The Director shall have the following duties:

- (a) Responsible to the Superintendent for carrying out the program of emergency management.
- (b) Publish, with the approval of the Superintendent and the Board of Police Commissioners, a plan of action in emergencies which shall contain rules and regulations for emergency management and the civilian population;
- (c) Provide preliminary training and instruction and advise the civilian population on suitable measures to provide protection from attack by all weapons of warfare and from natural disaster;
- (d) Establish a primary and one or more secondary control centers to serve as command posts during an emergency;
- (e) Carry out such additional duties in the field of Emergency Management as may be directed by the Superintendent of Police.

4. The Director may employ technical, clerical, stenographic and other personnel, as authorized by ordinance and the regulations of the Department of Police.

703.050 Deputy Directors -- Salaries -- Duties.—

1. The Superintendent of Police may appoint one or more Deputy Directors of Emergency Management as may be authorized by ordinance.
2. The salaries and terms and conditions of employment of the Deputy Directors shall be in accordance with applicable ordinance provisions and the rules and regulations of the Department of Police.
3. The Deputy Directors shall have the following duties:
 - (a) They shall provide staff assistance in the emergency management program areas of plans and operations, training and education, shelter management, radiological defense, resource management, communications and warning, public information, and administration;
 - (b) They shall assist the Director in formulating the planning necessary to provide for the protection of the citizens of St. Louis County during emergencies, and assist the Director in carrying out his duties under this chapter.
4. The Superintendent may designate one Deputy Director as "Chief Deputy," who shall assume the duties of Director in the Director's absence, or due to his death, resignation or removal. In the event of the Director's death, resignation or removal, he shall serve as Acting Director until such time as the Superintendent appoints a new Director, as stated herein.

703.060 Mutual Aid Plans and Agreements. -- The Director of Emergency Management shall sponsor and develop to the fullest extent possible mutual aid plans for disasters and agreements between St. Louis County and municipalities and political subdivisions, both in Missouri and Illinois, and shall at all times and to the fullest extent, coordinate the emergency management plans of St. Louis County with the other municipalities and political subdivisions in the metropolitan St. Louis area. The mutual aid arrangement shall include the furnishing or exchange of food, clothing, medical and other supplies, emergency housing, police services, health, medical and related services, fire-fighting, rescue, transportation and construction services, and such other services and arrangements as are necessary or advisable, in order to coordinate the various plans of emergency management between various municipalities and political subdivisions and to fully provide for mutual aid and assistance in

Attachment II (St. Louis County Emergency Management Code) To
ST. LOUIS COUNTY BASIC EMERGENCY OPERATIONS PLAN

the event of disaster.

703.070 State of Emergency -- Duties. -- In the event of actual enemy attack upon the United States or of the occurrence of disaster from fire, flood, earthquake, or other natural causes involving imminent peril to lives and property in St. Louis County, the County Executive, or during the Executive's temporary disability or absence from the County, the Chairman of the Council, as acting Executive, or the designated Executive, may declare that a state of emergency exists in St. Louis County and may exercise during the actual existence of such emergency the power to enforce all rules and regulations relating to emergency management, and acting under the provisions of Chapter 44, Revised Statutes of Missouri, or acting as an agent of the Governor may take control of all means of transportation and supplies, and all facilities including buildings and plants, and exercise all powers necessary to assure the safety and protection of the civilian population. He may in the event of such emergency by enemy attack, waive any requirements of statute or ordinance pertaining to the advertisement for bids for the performance of public work or entering into contracts. In exercising his powers, he shall be guided by regulations and orders issued by the Federal Government and the Governor of Missouri relating to civil defense and shall take no action contrary to orders issued by the Governor under similar emergency powers.

703.080 Non-liability for Emergency Management Acts. -Neither St. Louis County, the Superintendent of Police, nor any officer or member of the Office of Emergency Management shall be liable for personal injury or property damage sustained by any person appointed or acting as a volunteer worker or member of any agency engaged in emergency management security. Neither shall the County or any such officer or member be liable for the death or injury of any persons, or damage to property resulting from such emergency management activities.

703.090 Acceptance of Gifts or Loans. -- Whenever the federal government or the State of Missouri, or any person, firm or corporation offers to St. Louis County any services, equipment, supplies, materials or funds by way of gift, grant or loan, for purposes of emergency management the County Executive may accept such offer and may authorize the St. Louis County Police Department to receive same, subject to the terms of the offer and the rules and regulations, if any, of the agency making the offer.

703.100 Duties of Law Enforcement Officers. -- The law enforcement authorities of St. Louis County and of the political subdivisions and municipalities therein shall enforce all orders, rules and regulations issued by the County Executive or in his absence by the Superintendent of Police or in his absence the Director of Emergency Management during a declared state of emergency in St. Louis County and in addition enforce the rules and regulations issued pursuant to this chapter."

ADOPTED: September 27, 1990

ELLEN R. CONANT

CHAIRMAN, COUNTY COUNCIL

APPROVED: September 28, 1990

H. C. MILFORD

COUNTY EXECUTIVE

ATTEST: LELA APPERSON

DEPUTY ADMINISTRATIVE DIRECTOR

(Sample Mutual Aid II Contract) To
ST. LOUIS COUNTY BASIC EMERGENCY OPERATIONS PLAN

COUNTY MUTUAL AID II

CONTRACT FOR MUTUAL AID

THIS CONTRACT, made and entered into this _____ day of _____, 19____, by and between ST.LOUIS COUNTY, MISSOURI, hereinafter referred to as "COUNTY", and _____, a municipality in St. Louis County, Missouri, hereinafter referred to as the _____.

WITNESSETH THAT:

WHEREAS, the provisions of Sections 70.210 to 70.325, inclusive, R.S.Mo. 1986, empower municipalities or political subdivisions to contract and cooperate with each other for a common service, and Section 2.180 (20) St. Louis County Charter provides that the county Council may authorize contracts between the COUNTY and an incorporated area for a common service; and

WHEREAS, Section 703.060 SLCRO 1974, as amended, authorizes the Office of Emergency Management of St. Louis County to contract for its services with municipalities; and

WHEREAS, there exists the possibility of an occurrence within St. Louis County of a major disaster resulting from hostile action against the united States, or resulting from fire, flood, tornado or other natural causes, which would adversely affect the general welfare of citizens within the geographical confines of St. Louis County; and

WHEREAS, wisdom dictates that adequate preparation be made before any such disaster in order to minimize, so far as possible, the adverse effects thereof upon the area and the public potentially affected; and

WHEREAS, it is necessary that all the resources and facilities of the COUNTY, its various departments and agencies, and all its political subdivisions, municipal corporations, and other public agencies be made available to prevent and combat the effects of disasters; and

WHEREAS, the _____ has duly enacted and approved Ordinance No. _____, a copy of which is attached hereto and made a part hereof, authorizing the _____ to execute this contract;

NOW, THEREFORE, in consideration of the benefits to be derived from the mutual aid and assistance provided for herein, the parties hereto hereby agree as follows:

ARTICLE I
PLANNING AND PREPARATION

A. Civil Preparedness Plan. The parties to this contract agree to develop a plan providing for the necessary pre-disaster measures to be taken within its jurisdiction in order to minimize the adverse effects resulting from hostile action or natural disasters. Such plan shall additionally provide for the effective mobilization of all resources, personnel, services and facilities, both public and private, within its jurisdiction. Such plan shall conform to the maximum extent practicable to the "Master Emergency Operations Plan for Disaster of St. Louis County," with such plans as may be adopted by the State of Missouri and the government of the United States, and shall be consistent with this contract.

Copies of such plan shall be furnished to all parties to this contract and the Emergency Preparedness Council as hereinafter established.

B. St. Louis County Master Plan. St. Louis County shall prepare and implement a master disaster plan which shall be known as the "Master Emergency Operations Plan for Disaster of St. Louis County," which master plan shall provide for the mobilization of all resources and facilities available to St. Louis County for the benefit of all residents in the event of disaster. This master plan shall be administered and maintained by the St. Louis County Office of Emergency Management, in accordance with Chapter 703, St. Louis County Revised Ordinances 1974, as amended. A copy of said plan, market Appendix "A", is attached hereto and made a part hereof as if fully set out herein.

C. Aid and Assistance. The parties hereto agree to aid and assist _____ by furnishing those resources and facilities and to render those services, upon request of _____, prior to or during any disaster in order to prevent or minimize the effects thereof. All aid and assistance so furnished shall be provided in accordance with this contract and such mutual aid operational plans as may hereinafter be adopted by the parties hereto.

D. Testing and Evaluation. _____ agrees that it shall periodically conduct tests of its own disaster plan for the purpose of evaluating the effectiveness of such plan and making such changes to the plan, or in the operations pursuant thereto, as may be required to fulfill the intent of said plan and this contract. The parties further agree that they shall fully cooperate with each other in testing and evaluating the "Master Emergency Operations Plan for Disaster of St. Louis County" and such mutual aid operational plans as may hereafter be adopted by the parties hereto. Tests of all plans, municipal and County, pursuant to this paragraph, shall be made by the parties no less than once a year.

E. Emergency Preparedness Council. _____ hereby recognizes the establishment of the Emergency Preparedness Council and further

(Sample Mutual Aid II Contract) To
ST. LOUIS COUNTY BASIC EMERGENCY OPERATIONS PLAN

authorizes the St. Louis County Director of Emergency Management to act as its representative on such Council.

ARTICLE II
DISASTERS

A. The parties agree that in the event of a localized or County-wide Disaster, COUNTY shall render such aid and assistance as may be requested by _____ and deemed necessary by COUNTY. In rendering such aid and assistance COUNTY retains complete autonomy of management, control and supervision over the disaster relief operations.

B. _____ hereby agrees that in the event of a natural disaster or a declaration of a state of emergency that the St. Louis County Executive or his designated representative, the Director, Emergency Management, St. Louis County, shall be vested with full authority over, and control of, all disaster planning and relief measures within _____.

C. COUNTY hereby agrees that in the event of a natural disaster or a declaration of a state of emergency that the chief elected official or other appointed representatives for _____ shall automatically become a deputy disaster director and shall assist the St. Louis County Executive or his designated representative, Director, Emergency Management, St. Louis County, in the disaster relief operations.

ARTICLE III
TERM

This contract shall be in effect as to each party on the date it is executed by the said party and shall be operative and binding for a period of three (3) years and shall thereafter automatically be renewed for successive periods of three (3) years each unless any party desiring to terminate its own participation hereunder provides notice of termination to the other parties not less than thirty (30) days prior to the end of any such three (3) year period. Termination of said agreement shall be by resolution, ordinance, or other appropriate action.

ARTICLE IV
COST OF SERVICES; PROCUREMENT

A. Mutual Aid Services. Unless otherwise specifically agreed in writing by the parties hereto, resources and services extended pursuant to this contract, by COUNTY, shall be at no cost to the receiving party regardless of whether the emergency is localized or County-wide.

(Sample Mutual Aid II Contract) To
ST. LOUIS COUNTY BASIC EMERGENCY OPERATIONS PLAN

B. Procurement. During the state of emergency affecting the general welfare of the residents of St. Louis County, Missouri, which is declared by the appropriate federal, state or county authority, the parties hereby respectively agree that all statutory and all municipal procurement procedures are waived and do further authorize the proper governmental agencies to procure the services, supplies, equipment and materials as required without regard to provisions of such statutory ordinance procurement procedures and to bind where appropriate the party benefiting from such resources and services and to the extent necessary to requisition, commandeer or seize vital and necessary property for public use subject to the right of the owner of the property to have damages determined as provided by the state statutes in cases of the exercise of the power of eminent domain.

ARTICLE V
EXERCISE OF GOVERNMENTAL AUTHORITY

The activities of the parties pursuant to this contract and such mutual aid operating plans as may hereinafter be adopted are in exercise of the governmental authority of each party for the general welfare of its citizens. Accordingly, no party hereto, or their respective officials, representatives, agents or employees shall be liable for injury to persons or damage to property which is sustained by reason of action taken in accordance with this contract or any mutual aid operating plans. Each party covenants that if not otherwise now provided they, and each of them, will enact such ordinance(s) as may be required to implement and make lawful the intent of this paragraph within their respective jurisdictions.

ARTICLE VI
FEDERAL AND STATE LAW

This contract and such mutual aid operating plans as may hereafter be adopted shall not be construed as to conflict with, supersede or otherwise limit any similar or applicable law, rule, or regulation of the government of the United States or of the State of Missouri.

ARTICLE VII
CAPTIONS; SEVERABILITY

The captions included in this contract are used for the purposes of convenience only and shall not be construed as limiting or otherwise affecting the contract itself. In the event any portion of this contract shall for any reason be declared invalid or unenforceable, such invalidity or unenforceability shall not affect the remaining provisions hereof.

(Sample Mutual Aid II Contract) To
ST. LOUIS COUNTY BASIC EMERGENCY OPERATIONS PLAN

ARTICLE VIII
COUNTERPARTS

This contract may be executed in counterparts by the parties hereto and each such counterpart shall be deemed an original and all which together as there may be at any one time and shall constitute one and the same instrument.

ARTICLE IX
GENDER

The use herein of any pronouns denoting gender is for the purpose of convenience only and shall not be construed as limiting the positions or reference to any one gender.

IN WITNESS WHEREOF, this contract has been executed by the duly authorized representatives of each party and is operative and in effect as to each party as of the date and year first herein provided.

_____ (Municipality)

Attest:

By _____

Clerk

Executive Official

ST. LOUIS COUNTY, MISSOURI

Attest:

By _____

Administrative Director

County Executive

Approved:

Director, Emergency Management

Approved:

Superintendent of Police

Attachment III

(Sample Mutual Aid II Contract) To
ST. LOUIS COUNTY BASIC EMERGENCY OPERATIONS PLAN

Approved:

Chairman, Board of Police Commissioners

Approved as to legal form:

County Counselor

(List of Mutual Aid II Municipalities) To
ST. LOUIS COUNTY BASIC EMERGENCY OPERATIONS PLAN
MUTUAL AID II CONTRACT SIGNATORIES

	<u>Municipality</u>	<u>Approximate Population</u>
1)	Ballwin	26,941
2)	Bel Nor	720
3)	Bella Villa	1,812
4)	Beverly Hills	660
5)	Calverton Park	1,473
6)	Champ	11
7)	Charlack	1,388
8)	Chesterfield	42,332
9)	Clarkson Valley	2,604
10)	Cool Valley	1,407
11)	Country Club Hills	1,348
12)	Country Life Acres	101
13)	Creve Coeur	16,862
14)	Edmundson	1,111
15)	Ellisville	8,150
16)	Fenton	3,346
17)	Ferguson	22,286
18)	Frontenac	3,411
19)	Glen Echo Park	218
20)	Grantwood Village	904
21)	Greendale	748
22)	Hanley Hills	2,325
23)	Hillsdale	1,948
24)	Kinloch	2,702
25)	Lakeshire	1,467
26)	Mackenzie	148
27)	Manchester	6,542
28)	Marlborough	1,949
29)	Moline Acres	2,710
30)	Normandy	5,063
31)	Northwoods	5,106
32)	Norwood Court	888
33)	Oakland	1,593
34)	Olivette	7,573
35)	Pasadena Hills	1,165
36)	Pine Lawn	5,083
37)	St. George	1,359
38)	St. John	7,466
39)	Shrewsbury	6,416
40)	Sunset Hills	5,704
41)	Sycamore Hills	667

Attachment IV (List of Mutual Aid II Municipalities) To
ST. LOUIS COUNTY BASIC EMERGENCY OPERATIONS PLAN

42)	Town & Country	10,960
43)	Uplands Park	499
44)	Velda City	1,597
45)	Velda Village Hills	1,315
46)	Vinita Park	2,001
47)	Vinita Terrace	338
48)	Warson Woods	2,049
49)	Webster Groves	22,987
50)	Westwood	300
51)	Wildwood	16,379
52)	Winchester	1,794
53)	Woodson Terrace	4,362

		270,288

(Sample Mutual Aid I Contract) To
ST. LOUIS COUNTY BASIC EMERGENCY OPERATIONS PLAN

COUNTY MUTUAL AID I

CONTRACT FOR MUTUAL AID

THIS CONTRACT, made and entered into this _____ day of _____, 19____, by and between ST. LOUIS COUNTY, MISSOURI, hereinafter referred to as "COUNTY", and _____, a municipality in St. Louis County, Missouri, hereinafter referred to as the _____.

WITNESSETH THAT:

WHEREAS, the provisions of Sections 70.210 to 70.325, inclusive, R.S.Mo. 1986, empower municipalities or political subdivisions to contract and cooperate with each other for a common service, and Section 2.180 (20) St. Louis County Charter provides that the county Council may authorize contracts between the COUNTY and an incorporated area for a common service; and

WHEREAS, Section 703.060 SLCRO 1974, as amended, authorizes the Office of Emergency Management of St. Louis County to contract for its services with municipalities; and

WHEREAS, there exists the possibility of an occurrence within St. Louis County of a major disaster resulting from hostile action against the united States, or resulting from fire, flood, tornado or other natural causes, which would adversely affect the general welfare of citizens within the geographical confines of St. Louis County; and

WHEREAS, wisdom dictates that adequate preparation be made before any such disaster in order to minimize, so far as possible, the adverse effects thereof upon the area and the public potentially affected; and

WHEREAS, it is necessary that all the resources and facilities of the COUNTY, its various departments and agencies, and all its political subdivisions, municipal corporations, and other public agencies be made available to prevent and combat the effects of disasters; and

WHEREAS, the _____ has duly enacted and approved Ordinance No. _____, a copy of which is attached hereto and made a part hereof, authorizing the _____ to execute this contract;

NOW, THEREFORE, in consideration of the benefits to be derived from the mutual aid and assistance provided for herein, the parties hereto hereby agree as follows:

(Sample Mutual Aid I Contract) To
ST. LOUIS COUNTY BASIC EMERGENCY OPERATIONS PLAN

ARTICLE I
PLANNING AND PREPARATION

A. Civil Preparedness Plan. The parties to this contract agree to develop a plan providing for the necessary pre-disaster measures to be taken within their jurisdiction in order to minimize the adverse effects resulting from hostile action or natural disasters. Such plan shall additionally provide for the effective mobilization of all resources, personnel, services and facilities, both public and private, within its jurisdiction. Such plan shall conform to the maximum extent practicable to the "Master Emergency Operations Plan for Disaster of St. Louis County," with such plans as may be adopted by the State of Missouri and the government of the United States, and shall be consistent with this contract.

Copies of such plan shall be furnished to all parties to this contract and the Emergency Preparedness Council as hereinafter established.

B. St. Louis County Master Plan. St. Louis County shall prepare and implement a master disaster plan which shall be known as the "Master Emergency Operations Plan for Disaster of St. Louis County," which master plan shall provide for the mobilization of all resources and facilities available to St. Louis County for the benefit of all residents in the event of disaster. This master plan shall be administered and maintained by the St. Louis County Office of Emergency Management, in accordance with Chapter 703, St. Louis County Revised Ordinances 1974, as amended. A copy of said plan, market Appendix "A", is attached hereto and made a part hereof as if fully set out herein.

C. Aid and Assistance. The parties hereto agree to aid and assist each other by furnishing those resources and facilities and to render those services, upon request of each party, prior to or during any disaster in order to prevent or minimize the effects thereof. All aid and assistance so furnished shall be provided in accordance with this contract and such mutual aid operational plans as may hereinafter be adopted by the parties hereto.

D. Testing and Evaluation. The parties to this contract agree that it shall periodically conduct tests of its own disaster plan for the purpose of evaluating the effectiveness of such plan and making such changes to the plan, or in the operations pursuant thereto, as may be required to fulfill the intent of said plan and this contract. The parties further agree that they shall fully cooperate with each other in testing and evaluating the "Master Emergency Operations Plan for Disaster of St. Louis County" and such mutual aid operational plans as may hereafter be adopted by the parties hereto. Tests of all plans, municipal and County, pursuant to this paragraph, shall be made by the parties no less than once a year.

E. Emergency Preparedness Council. The parties hereto do by these presents establish an Emergency Preparedness Council consisting of the St. Louis County Director of Emergency Management and the Civil Defense Director or other representative

(Sample Mutual Aid I Contract) To
ST. LOUIS COUNTY BASIC EMERGENCY OPERATIONS PLAN
appointed by the parties hereto to meet _____ to formulate policy
and programs in support of this contract.

ARTICLE II DISASTERS

The parties acknowledge that while each is prepared to render aid and assistance to the other on request, the party so requesting aid and assistance shall, unless hereafter otherwise specified by any such requesting party, retain complete autonomy of management, control and supervision over its own disaster relief operations as augmented by assistance from the other parties hereto. Notwithstanding the foregoing, the parties agree that in the event a disaster or threat of disaster occurs simultaneously in more than one municipality or occurs so close in time as to require the allocation of resources and services available to the St. Louis County Office of Emergency Management or in the event that a state of emergency is declared by the appropriate federal, state or county authority (all of the foregoing hereinafter referred to as "County-wide Disaster"), then the St. Louis County Executive or his designated representative, Director, Emergency Management, shall be vested with full authority over, and control of, all disaster planning and relief measures, regardless of the corporate boundaries now existing or as hereafter established.

A. Localized Disasters; Officials and Duties. The responsible local official, chief elected official, or other appointed representative, in whose jurisdiction a localized disaster occurs, shall remain in charge even at such time as mutual aid is provided including the direction of such personal and other resources as are provided pursuant to this agreement unless said local official shall delegate such responsibility.

B. County-wide Disaster; Officials and Duties. The parties agree that if final County-wide authority over disaster relief is implemented pursuant to this paragraph, in addition to the St. Louis County Executive or his representative, the Director, Emergency Management, as provided for under St. Louis County Ordinance, the chief elected officials or other appointed representatives for each of the municipalities shall automatically become a deputy disaster director and shall have responsibility for the disaster planning and relief measures for the geographical area comprising his own municipality. In this capacity he shall act in accordance with the direction of the County Executive or his designated representative in all matters which affect or which potentially affect the general welfare of all residents of St. Louis County, Missouri.

(Sample Mutual Aid I Contract) To
ST. LOUIS COUNTY BASIC EMERGENCY OPERATIONS PLAN
ARTICLE III
TERM

This contract shall be in effect as to each party on the date it is executed by the said party and shall be operative and binding for a period of three (3) years and shall thereafter automatically be renewed for successive periods of three (3) years each unless any party desiring to terminate its own participation hereunder provides notice of termination to the other parties not less than thirty (30) days prior to the end of any such three (3) year period. Termination of said agreement shall be by resolution, ordinance, or other appropriate action.

ARTICLE IV
COST OF SERVICES; PROCUREMENT

A. Mutual Aid Services. Unless specifically agreed in writing by the parties hereto, resources and services extended pursuant to this contract, by any of the parties hereto, shall be at no cost to the receiving party regardless of whether the emergency is localized or County-wide.

B. Procurement. During the state of emergency affecting the general welfare of the residents of St. Louis County, Missouri, which is declared by the appropriate federal, state or county authority, the parties hereby respectively agree that all statutory and all municipal procurement procedures are waived and do further authorize the proper governmental agencies to procure the services, supplies, equipment and materials as required without regard to provisions of such statutory ordinance procurement procedures and to bind where appropriate the party benefiting from such resources and services and to the extent necessary to requisition, commandeer or seize vital and necessary property for public use subject to the right of the owner of the property to have damages determined as provided by the state statutes in cases of the exercise of the power of eminent domain.

ARTICLE V
EXERCISE OF GOVERNMENTAL AUTHORITY

The activities of the parties pursuant to this contract and such mutual aid operating plans as may hereinafter be adopted are in exercise of the governmental authority of each party for the general welfare of its citizens. Accordingly, no party hereto, or their respective officials, representatives agents or employees shall be liable for injury to persons or damage to property which is sustained by reason of action taken in accordance with this contract or any mutual aid operating plans. Each party covenants that if not otherwise now provided they, and each of them, will enact such ordinance(s) as may be required to implement and make lawful the intent of this paragraph within their respective jurisdictions.

(Sample Mutual Aid I Contract) To
ST. LOUIS COUNTY BASIC EMERGENCY OPERATIONS PLAN
ARTICLE VI
FEDERAL AND STATE LAW

This contract and such mutual aid operating plans as may hereafter be adopted shall not be construed as to conflict with, supersede or otherwise limit any similar or applicable law, rule, or regulation of the government of the United States or of the State of Missouri.

ARTICLE VII
CAPTIONS; SEVERABILITY

The captions included in this contract are used for the purposes of convenience only and shall not be construed as limiting or otherwise affecting the contract itself. In the event any portion of this contract shall for any reason be declared invalid or unenforceable, such invalidity or unenforceability shall not affect the remaining provisions hereof.

ARTICLE VIII
COUNTERPARTS

This contract may be executed in counterparts by the parties hereto and each such counterpart shall be deemed an original and all which together as there may be at any one time and shall constitute one and the same instrument.

ARTICLE IX
GENDER

The use herein of any pronouns denoting gender is for the purpose of convenience only and shall not be construed as limiting the positions or reference to any one gender.

IN WITNESS WHEREOF, this contract has been executed by the duly authorized representatives of each party and is operative and in effect as to each party as of the date and year first herein provided.

_____ (Municipality)

Attest:

By _____

Clerk

Executive Official

ST. LOUIS COUNTY, MISSOURI

(Sample Mutual Aid I Contract) To
ST. LOUIS COUNTY BASIC EMERGENCY OPERATIONS PLAN

Attest:

By _____

Administrative Director

County Executive

Approved:

Director, Emergency Management

Approved:

Superintendent of Police

Approved:

Chairman, Board of Pol

Approved as to legal form:

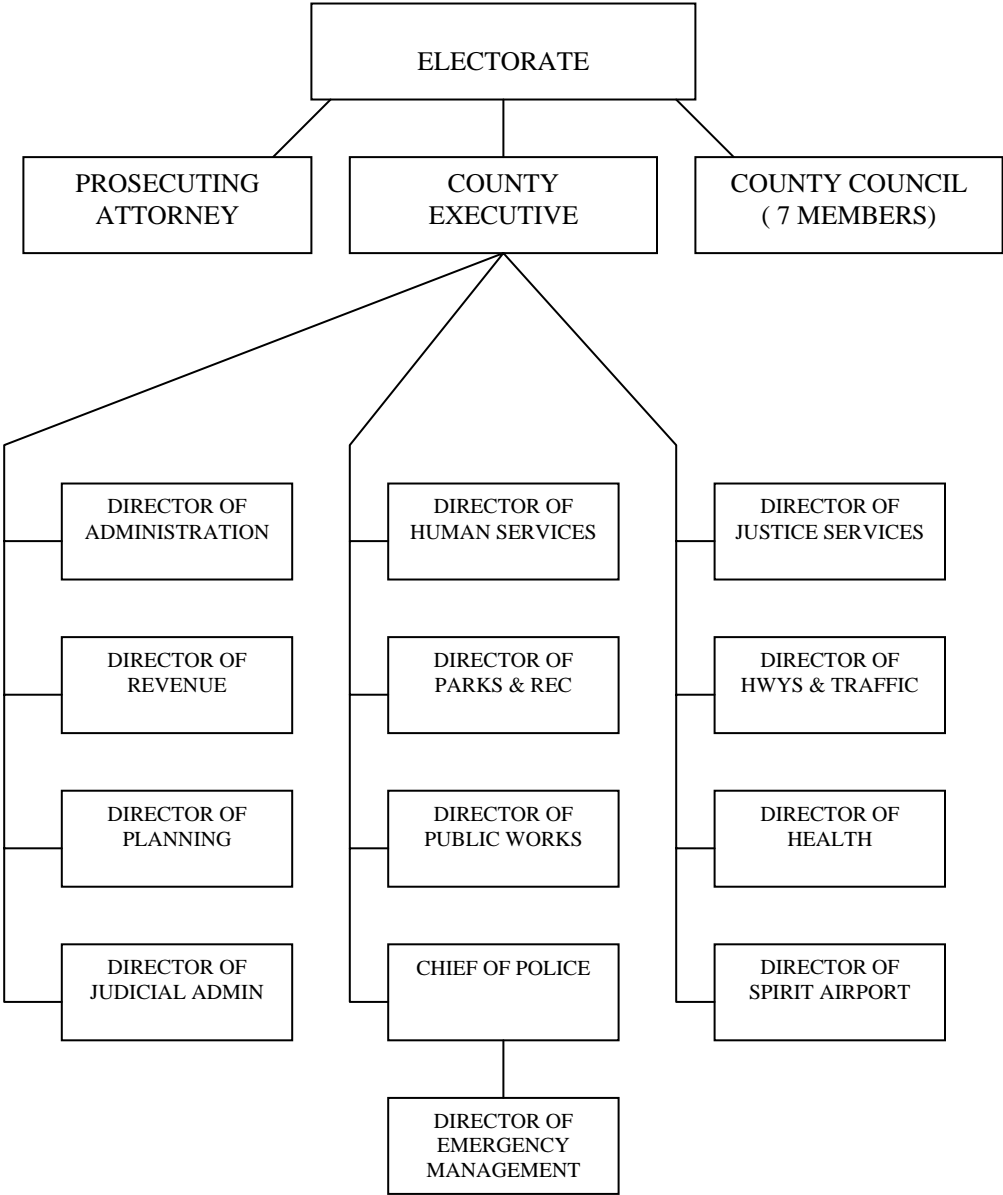
County Counselor

(List of Mutual Aid I Municipalities) To
ST. LOUIS COUNTY BASIC EMERGENCY OPERATIONS PLANMUTUAL AID I CONTRACT SIGNATORIES

	<u>Municipality</u>	<u>Approximate Population</u>
1)	Bellefontaine Neighbors	10,922
2)	Bel Ridge	3,435
3)	Berkeley	12,250
4)	Black Jack	6,131
5)	Breckenridge Hills	5,181
6)	Brentwood	8,150
7)	Bridgeton	17,732
8)	Clayton	13,926
9)	Crestwood	11,234
10)	Dellwood	5,245
11)	Des Peres	8,402
12)	Eureka	4,683
13)	Florissant	51,101
14)	Glendale	5,945
15)	Hazelwood	26,829
16)	Jennings	15,841
17)	Kirkwood	28,318
18)	Maplewood	9,962
19)	Maryland Heights	25,440
20)	Overland	17,987
21)	Pagedale	4,113
22)	Richmond Heights	10,448
23)	Riverview	3,242
24)	Rock Hill	5,217
25)	St. Ann	14,449
26)	University City	40,087
27)	Valley Park	4,176
28)	Wellston	3,612

	Total.....	374,058

(St. Louis County Government Organization) To
ST. LOUIS COUNTY BASIC EMERGENCY OPERATIONS PLAN




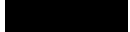
(St. Louis County Government Officials) To
ST. LOUIS COUNTY BASIC EMERGENCY OPERATIONS PLAN

RESIDENCE ADDRESS POSITION/INCUMBENT RES./OFFICE PHONE

St. Louis County Executive
Charlie A. Dooley

Res: *
Off: 615-7016


* If it is necessary to contact Mr. Dooley at home, contact the St. Louis County Police Bureau of Communications at, 889-2341.



 COUNCIL MEMBER, DIST. 1
Hazel Erby
Res: 
Off: 234-4952



 COUNCIL MEMBER, DIST. 2
Kathleen Kelly Burkett
Res: 
Off: 615-5437

 COUNCIL MEMBER, DIST. 3
Skip Mange
Res: 
Off: 615-5438

 COUNCIL MEMBER, DIST. 4
Mike O'Mara
Res: 
Off: 615-5439

 COUNCIL MEMBER, DIST. 5
Kurt Odenwald
Res: 
Off: 615-5441

 COUNCIL MEMBER, DIST. 6
John Campisi
Res: 
Off: 615-5442

 COUNCIL MEMBER, DIST. 7
Greg Quinn
Res: 
Off: 615-5443

 COUNCIL ADMINISTRATIVE DIRECTOR
Suzanne Pratl
Res: 
Off: 615-5440

January 2006

(St. Louis County Government Officials) To
ST. LOUIS COUNTY BASIC EMERGENCY OPERATIONS PLAN
PROSECUTING ATTORNEY

Robert McCulloch

Res: [REDACTED]
Off: 615-2610

COMMANDER OF EMERGENCY MANAGEMENT

Captain Robert C. Young

Res: [REDACTED]
Off: 628-5400

Attachment IX (St. Louis County Revised Ordinance, Title VII, Chapter 701, Section 200) to
ST. LOUIS COUNTY BASIC EMERGENCY OPERATIONS PLAN

BILL NO. 401,1992

ORDINANCE NO. 16,196, 1992

Introduced By Councilman Shear

AN ORDINANCE

AMENDING CHAPTER 701, TITLE VII SLCRO 1974 AS AMENDED, "DEPARTMENT OF POLICE," BY REPEALING SECTION 701.200 AND ENACTING IN LIEU THEREOF A NEW SECTION 701.200 PERTAINING TO MUTUAL COOPERATION FOR PEACE CONSERVATION.

BE IT ORDAINED BY THE COUNTY COUNCIL OF ST. LOUIS COUNTY, MISSOURI, AS FOLLOWS:

SECTION 1. Chapter 701, Title VII SLCRO 1974 as amended, "Department of Police," is amended by repealing therefrom Section 701.200 and enacting in lieu thereof the following:

701.200 Mutual Cooperation for Peace Conservation. --

1. The Superintendent of the Department of Police of St. Louis County, Missouri, is authorized and directed to dispatch men and equipment to render mutual aid to any city, town or village located within St. Louis County and to the City of St. Louis for the purpose of quelling and suppressing assaults and batteries, riots, routs, and affrays and insurrection and conserving the peace in St. Louis County or the City of St. Louis. The Superintendent may further dispatch officers and equipment to render assistance to any other public safety agency in the state or in a bordering state at the time of a significant emergency such as fire, earthquake, flood, tornado, hazardous material incident or other such disaster, at the request of said public safety agency.
2. The County Executive is hereby authorized upon terms approved by order of the County Council to contract with any City, town or village located within St. Louis County, Missouri, and with the City of St. Louis, for members of the police forces of those municipalities to respond to requests for assistance within the unincorporated areas of St. Louis County for the purpose of quelling and suppressing assaults and batteries, riots, routs, affrays and insurrection and conserving the peace within St. Louis County or within the City of St. Louis Missouri.
3. Each police officer performing services in any other municipality in accordance with the terms of this ordinance shall have all the powers, rights, privileges, duties and immunities as the members of the police force of the municipalities requesting

Attachment IX (St. Louis County Revised Ordinance, Title VII, Chapter 701, Section 200) to
ST. LOUIS COUNTY BASIC EMERGENCY OPERATIONS PLAN
assistance.

4. Equipment and property utilized in the carrying out of the police services provided by this ordinance shall be at the risk of the municipality owning the same and any loss or damage thereto shall be borne by such owner municipality; provided that nothing herein contained shall be construed to limit the liability of any municipality or of its agents, servants or employees arising out of tortious conduct.

ADOPTED: November 5, 1992

JOHN R. SHEAR

CHAIRMAN, COUNTY COUNCIL

APPROVED: November 6, 1992

BUZZ WESTFALL

COUNTY EXECUTIVE

ATTEST: JEANETTE O. HOOK

DEPUTY ADMINISTRATIVE DIRECTOR

ESF	1	2	3	4	5	6	7	8	9	10	11	12	13	14	15	16	17	18
	Transportation	Public Works/Engineering	Mass Care	Volunteers/Donators	Information/Planning	Health and Medical	Animal Services	Communications	Public Information	Law Enforcement	Resource Support	Energy	Food and Water	Business/Industry	Military Support	Firefighting	Search and Rescue	Hazardous Materials
	P = Primary Responsibility S = Support Responsibility																	
COUNTY EXECUTIVE									S	S				S	S			
EMERGENCY MANAGEMENT	S	S	S	S	S	S	S	S	S	S	P	P	S	P	P	S	S	S
DEPARTMENT OF ADMINISTRATION	S				S				S		S							
DEPARTMENT OF HEALTH			S			P	P		S				P					S
DEPARTMENT OF HIGHWAYS AND TRAFFIC	P	S			S			S	S		S	S				S		
DEPARTMENT OF HUMAN SERVICES			S	P					S									
DEPARTMENT OF JUDICIAL ADMINISTRATION									S	S								
DEPARTMENT OF JUSTICE SERVICES									S	S	S							
DEPARTMENT OF PARKS AND RECREATION	S	S	P	S	S		S	S	S	S	S	S	S					S
DEPARTMENT OF PLANNING	S	S	S		P				S									
DEPARTMENT OF POLICE	S	S	S	S	S	S		P	P	P				S	S	S	S	S
DEPARTMENT OF PUBLIC WORKS	S	P	S						S									
DEPARTMENT OF REVENUE					S				S									
SPIRIT AIRPORT	S					S			S		S							
FIRE SERVICE COORDINATOR		S				S		S	S		S			S		P	P	P
HOUSING AUTHORITY			S															
ECONOMIC COUNCIL														S				
For a more comprehensive description of duties associated with PRIMARY and SUPPORT role functions, refer to the Basic Emergency Operations Plan, Section VII; A; "Emergency Support Functions."																		